

# IntelliVIEW

## Comprehensive software suite

The industry's most powerful integrated component design and management software for steel and wood-framed structures.

The IntelliVIEW suite is a fully integrated software solution for the layout and design of a building's rough framing elements including roof and floor trusses, wall panels, solid sawn, EWP, construction hardware, sheathing and various ancillaries.

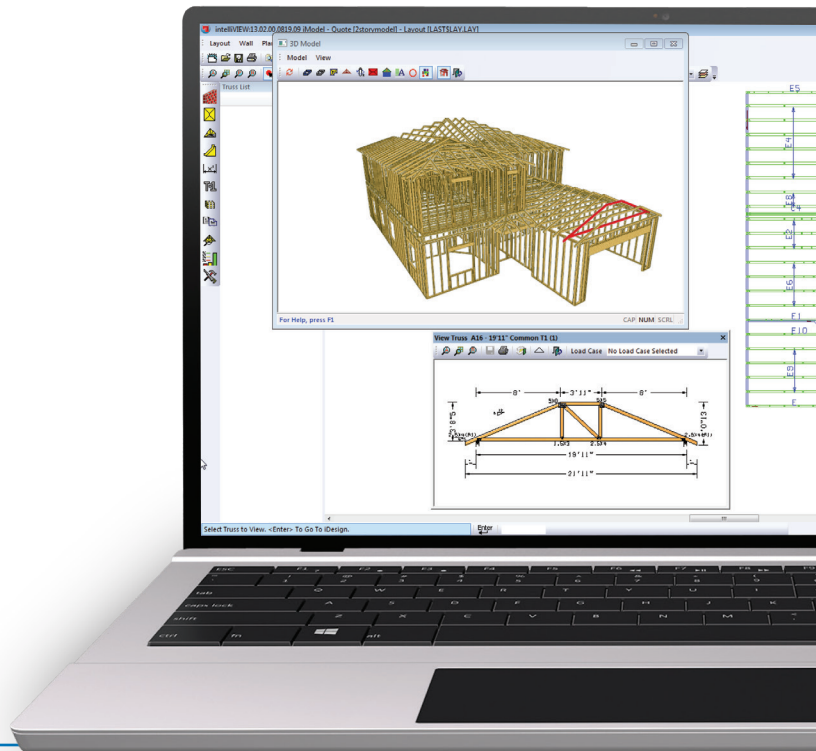
The IntelliVIEW suite provides the industry's most complete analysis of the design, cost information and bill of material. The software promotes increased profits by reducing plate and lumber use.

Once the designs are optimized, they can be saved to the Component Catalog for use on future jobs. With the push of a button, the truss catalog can be searched for potential matches. The designer is presented with the potential match and must accept or reject it. When accepted, it automatically loads into the job, saving time and simplifying the workload.

Full integration means that changes can be made anywhere in the software suite and all occurrences will be updated in real time.

Alpine is known for its superior helpdesk and service. Combine this with the speed of design that can be obtained with IntelliVIEW's intuitive process and fully customizable database screens to increase efficiency and productivity in your shop.

- **iCommand**  
Manage and analyze data
- **iModel**  
Create truss layout and profiles for design
- **iPanel**  
Create wall layout and panel design
- **iDesign**  
Optimize component design
- **iSource**  
Manage use of materials inventory



### Features Available in 2018 – Q1 & Q2

Feature	Summary	Highlights	Application
<b>Piggyback Enhancements</b>	Piggyback trusses now modelled (true to production reality) as separate components for the Base and Cap truss, with expanded connection options.	<ul style="list-style-type: none"> <li>• More accurate 3D model</li> <li>• Drop Flat Top Chord options for Base Truss</li> <li>• Greater control of gap</li> <li>• Separated Drawing sheets for each component</li> </ul>	<ul style="list-style-type: none"> <li>• iModel</li> <li>• iDesign</li> </ul>
<b>Truss Dimension Enhancements</b>	More dimension formats are now available. Face to Face and Face to center with accumulative dimension format.	<ul style="list-style-type: none"> <li>• Adds flexibility in the design</li> </ul>	<ul style="list-style-type: none"> <li>• iModel</li> </ul>
<b>Supplemental Plate</b>	The ability to add cosmetic (i.e. non-structural) Supplemental Plating to trusses.	<ul style="list-style-type: none"> <li>• For users who want to add Supplemental Plates at a specific location, on a truss member based upon their truss design practices</li> </ul>	<ul style="list-style-type: none"> <li>• iDesign</li> </ul>
<b>Finish Wall Feature</b>	Use this new layer to easily enter and adjust drawings given out-to-out of sheathing dimensions. Simply modify wall finish widths when sheathing thicknesses change. Trusses will auto-adjust to accommodate the new finish layer width.	<ul style="list-style-type: none"> <li>• Modify finish width for each wall for variable sheathing or finish widths</li> <li>• Auto-adjusts the bottom chord, overhangs and cantilevers of the truss to account for the finish width</li> <li>• Available for external bearing walls</li> </ul>	<ul style="list-style-type: none"> <li>• iModel</li> </ul>
<b>Specified KZT</b>	Specify a KZT (Topographical) factor in wind settings.	<ul style="list-style-type: none"> <li>• The topographical factor is set with entries about the escarpment or hill, this feature will allow the user to apply a factor, (ie 2.00) for the KZT</li> </ul>	<ul style="list-style-type: none"> <li>• iDesign</li> </ul>
<b>iPanel New Foundation</b>	New iPanel Architecture supporting advanced edit tools and 3D view for Panels.	<ul style="list-style-type: none"> <li>• Eliminates redundancy from the old panel engine</li> <li>• Simplifies the Panelization process</li> <li>• Adds Consistency and efficiency for the panel designer</li> </ul>	<ul style="list-style-type: none"> <li>• iPanel</li> </ul>
<b>Panel Labels</b>	Create the labels after the panels are finished. This allows the designer to define a sequence of panels using different selection methods.	<ul style="list-style-type: none"> <li>• Reduction of errors</li> <li>• Maximizes design efficiency</li> <li>• Adds flexibility in the design</li> <li>• New label symbol</li> </ul>	<ul style="list-style-type: none"> <li>• iPanel</li> </ul>
<b>Wall Groups</b>	Allows the designer to save finished detailed walls/panels in a common place to be reused in the same layout or in different layouts.	<ul style="list-style-type: none"> <li>• Minimizes wall/panel input and design time</li> <li>• Ideal for multifamily or tract</li> </ul>	<ul style="list-style-type: none"> <li>• iPanel</li> </ul>
<b>Re-Generation of Tees</b>	Allows the designer the ability to change a tee junction subcomponent in a panelized wall without destroying any edits previously made to the panels. This enhanced tool allows to define a tee junction which previously did not exist in walls w/o panels. Moreover, it allows to define a new Subcomponent into an existing panelized wall when a new wall is added that creates a Tee junction which previously did not exist.	<ul style="list-style-type: none"> <li>• Allows to create/regenerate tee's subcomponents with or without framing</li> <li>• Eliminates re-panelization</li> <li>• Maximizes design Efficiency</li> <li>• Flexible to select all walls or select a specific(s) tee junctions</li> </ul>	<ul style="list-style-type: none"> <li>• iPanel</li> </ul>

# IntelliVIEW

## Alpine Software Major Features in 2018 (cont.)

### Features Available in 18.02 – Q4

Feature	Summary	Highlights	Application
<b>Treated Lumber</b>	IntelliVIEW will identify, price, and analyze treated and specially designated lumber differently than general stock lumber and that all output indicates the location of specially designated/ treated lumber members.	<ul style="list-style-type: none"> <li>In iSource you are able to add treated and specially designated lumber to your inventory.</li> <li>iModel, iDesign, and iPanel indicate the treated and specially designated lumber during design time so the Designer can easily identify the location of the member.</li> <li>iDesign applies the engineering values during analysis of the treated or specially designated lumber member.</li> <li>Output accurately reflects the engineering values and highlights designated members on the output.</li> </ul>	<ul style="list-style-type: none"> <li>iCommand</li> <li>iDesign</li> <li>iSource</li> <li>iPanel</li> <li>iModel</li> </ul>
<b>Ontario Code Compliance</b>	Implement Ontario Building Code changes for 2018.	<ul style="list-style-type: none"> <li>Stay in compliance with latest building codes</li> </ul>	<ul style="list-style-type: none"> <li>iDesign</li> </ul>
<b>Flip Reference Truss</b>	Users can currently use "Reference Truss" to match web patterns and bracing lines. The "Reference Truss" can now be flipped to allow matching of trusses that may have been stubbed along the wall plate line.	<ul style="list-style-type: none"> <li>Streamlines production and site-framing</li> </ul>	<ul style="list-style-type: none"> <li>iDesign</li> </ul>
<b>Blocking Panel Enhancements</b>	Blocking Panel Enhancements providing installation tolerances, roof bevels and ability to stack top chord for notching.	<ul style="list-style-type: none"> <li>Hold back End Vertical or Adjust Span (tolerance)</li> <li>Auto Adjust for Roof Bevel</li> <li>Stacked Top Chords</li> </ul>	<ul style="list-style-type: none"> <li>iModel</li> <li>iDesign</li> </ul>
<b>Stacked Rafters (Cal Hip /Midwest)</b>	Options for stacking Rafters in iModel and iDesign to cover conditions otherwise built using conventional framing. Incorporates "Prefer Wedge" option for wider coverage of different geometry cases.	<ul style="list-style-type: none"> <li>Ability to handle common West Coast framing practices with a plated component solution</li> </ul>	<ul style="list-style-type: none"> <li>iModel</li> <li>iDesign</li> </ul>
<b>Cal Hip Rafter High Heel End Types</b>	When the user adds a Cal Hip condition in iModel with a high heel height, a plated vertical leg and diagonal will be added automatically.	<ul style="list-style-type: none"> <li>Auto condition that could previously only be done manually.</li> <li>Ability to use a wedge for transitional heel heights.</li> </ul>	<ul style="list-style-type: none"> <li>iModel</li> <li>iDesign</li> </ul>
<b>Custom Openings</b>	Allows to apply and save special modifications to an opening (or stacked opening) and re-use the modified opening (with all parts and pieces) in different walls in the same layout or different layouts.	<ul style="list-style-type: none"> <li>Saves Designer time</li> <li>Maximizes design efficiency</li> <li>Adds flexibility in the design</li> <li>Reduction of errors</li> <li>Wall groups will allow the user to use custom openings in different jobs</li> </ul>	<ul style="list-style-type: none"> <li>iPanel</li> </ul>
<b>Copy / Paste Openings</b>	Allows the designer to copy and paste an opening to a wall in the same level. Also, it will be able to replace existing openings with the opening copied. All familiar input methods for openings will be available as part of the context menu.	<ul style="list-style-type: none"> <li>Saves designer time</li> <li>Ability to copy any opening (including stacked openings and custom openings)</li> <li>Ability to rename any opening in layout</li> <li>Adds flexibility in the design</li> </ul>	<ul style="list-style-type: none"> <li>iPanel</li> </ul>
<b>Flip Subcomponents 4 ways</b>	Allows the panel designer to flip the sides or the edges for any subcomponent located in any joint definitions. This will help to reduce the number of subcomponents created by the company.	<ul style="list-style-type: none"> <li>Helps to reduce the list of subcomponents</li> <li>Adds flexibility in the design</li> <li>Maximizes design efficiency</li> </ul>	<ul style="list-style-type: none"> <li>iPanel</li> </ul>

# IntelliVIEW

## Comprehensive software suite

### Highlights

#### ■ Layout Viewer

Work in iDesign yet select trusses from iModel.

#### ■ Save to layout

Ability to design, plate, splice and engineer similar profile trusses using the same component, yet not over writing the existing.

#### ■ Auto Snow Drift Loads

Auto fast and accurate loading of Mansard, Parapet and Stepped Conditions.

#### ■ Load Profile Truss

Fast and accurate application of unbalanced loads to split trusses.

#### ■ Blocking Panel Enhancement

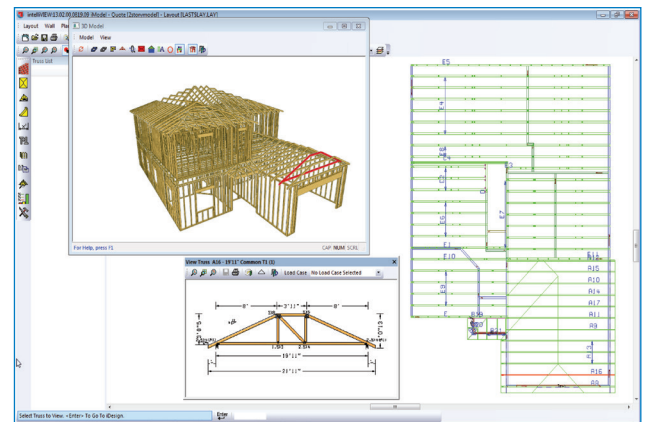
Ability to hold back span and/or verticals, adjust for the roof bevel and stack the top chord.

#### ■ Supplemental Plate

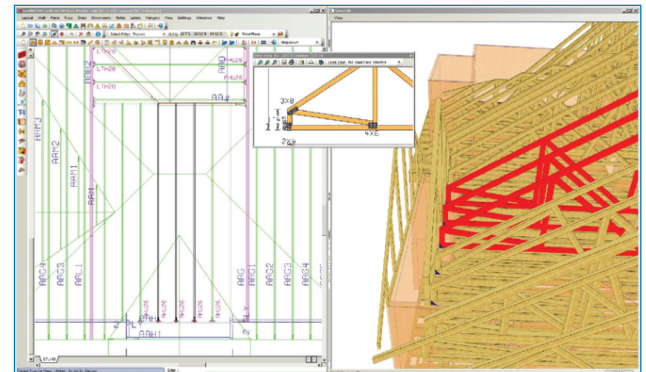
Ability to add cosmetic plates.

#### ■ Flip Reference Truss

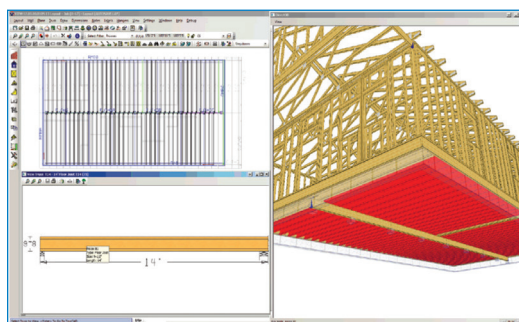
Ability to show a reverse reference truss—check the matching of chords and webs.



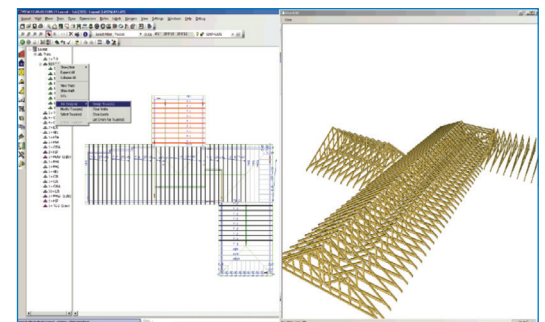
*Design, analyze and manage with the industry's most powerful software*



*Hanger Design*



*Array of EWP Designs*



*Link Design*



155 Harlem Avenue  
North Building – 4th Floor  
Glenview, Illinois 60025  
800-521-9790  
alpineitw.com

For more information contact your local Alpine sales manager  
or call **800 521 9790**