



EAGLE METAL

True.

As a **family owned**, full-service plate supplier, Eagle Metal serves **independent** truss manufacturers. For more than **20 years**, we have provided component manufacturers with quality connector products, structural component software and dependable, **customer-first** support.

Partner with us today.

Connector Products • Structural Component Software • Customer-First Support

eaglemetal.com • 1-800-521-3245

For reader service, go to www.sbcmag.info/eagle.htm



Wood Truss Systems inc.
MANUFACTURERS' REPRESENTATIVES

Truss and wood component machinery experts for over 30 years. We can help you enter the component industry or refine your existing facility with custom equipment solutions featuring:

New & Used

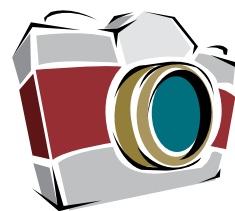
- ▲ Truss Production Equipment
- ▲ Wall Panel Framing Equipment
- ▲ Automatic & Manual Cutting Equipment: Component, Radial Arm, Linear Single Blade Saws
- ▲ Plant Layouts / Production Consultants
- ▲ Automated Jigging Systems
- ▲ Automated Mesuring Devices
- ▲ Replacement Production Surfaces

Count on effective, economical and timely solutions.

www.WoodTrussSystems.com

888.288.WTSI (9874) 

For reader service, go to www.sbcmag.info/wts.htm



Parting Shots

Share your stories and photos with us! Send submissions to partingshots@sbcmag.info.



In early 2006, the Missouri Truss Fabricators Association (MTFA) received a simple request for a truss education program at the Johnson County Contractor's Licensing Spring Educational Seminar in Kansas City. The chapter's first four-hour seminar for building officials and contractors was such a success that they were invited back to give an eight-hour presentation for the fall conference, and they have been returning ever since! By April 2008, the Johnson County Building Officials (JOCOBO) committee unanimously recommended that a partnership be formed with the chapter to conduct a series of training classes, formalizing MTFA's position as a reliable source for educational programs in the marketplace.

This November, the chapter received a letter of praise and thanks for its continuing efforts. As stated by Sean W. Reid, C.B.O., Program Manager, Johnson County Contractor Licensing Program, "I consider our work together over the past four years to represent the perfect marriage of the regulatory and manufacturing sides of the construction industry. By working together to provide relevant, professionally presented education, we benefit our community and industry beyond measure.... The positive result of this work will be enjoyed by building inspection departments, truss manufacturers, and builders utilizing component construction for years to come." **SBC**

Forensic & Technical Experts

60+ Years of Combined Experience
Materials & Construction Testing
Engineering Services
Investigative Inspection/Analysis & Expert Witness
Forensic Engineering

6300 Enterprise Lane
Madison, WI 53719
www.qualtim.com
608.310.6723



For reader service, go to www.sbcmag.info/qualtim.htm

REACH FOR EXCELLENCE

Take Your Plant to New Heights with SCORE



SBCA SCORE
Structural Component Operations Reaching for Excellence

"In order to succeed, our customers need to know they can count on us to provide what's needed. Working with SBCA and becoming SCORE certified proves we are committed to excellence."

— Steve Kennedy, Engineer/Training Manager, Lumber Specialties

Set your company apart with SCORE's certification program that incorporates all of SBCA's education and training programs – helping you implement cost-effective industry best practices. Learn more about options and how to get started at www.sbcindustry.com/score.php.



SCORE Elite	SCORE Leaders	SCORE Achievers
ProBuild Manufacturing www.probuild.com	Capital Structures www.capstructures.com Fort Smith, AR	Latco Structural Components www.latcoinc.com Lincoln, AR
Anchorage, AK Big Lake, AK Chugiak, AK Kenai, AK National City, CA Dolores, CO Longmont, CO Lady Lake, FL Milton, FL Plant City, FL Norcross, GA	Dakota Craft Truss www.dakotacraft.com Rapid City, SD	Tri-County Truss, Inc. www.tricountytruss.com Burlington, WA
Pooler, GA Hawarden, IA New Hampton, IA Indianapolis, IN Valley Center, KS Dry Ridge, KY Wadena, MN Albemarle, NC Albuquerque, NM Berlin, NJ Delaware, OH	Lumber Specialties www.lbrspec.com Dyersville, IA • Story City, IA	Truss Systems, Inc. www.trussystemsinc.com Oxford, GA
Clackamas, OR Mitchell, SD Buda, TX Carrollton, TX Mercedes, TX West Point, VA Auburn, WA Walla Walla, WA West Richland, WA Spokane, WA De Pere, WI	Plum Building Systems, LLC www.plumbuildingsystemsinc.com West Des Moines, IA	
Shelter Systems Limited www.sheltersystems.com • Westminster, MD	True House, Inc. www.truehouse.com Jacksonville, FL	
Sun State Components of Nevada, Inc. www.sunstatenv.com • North Las Vegas, NV	Truss Craft www.trusscraft.com Cheyenne, WY	

Hardware's Now Digital!

ITW Building Components Group is pleased to announce the launch of a complete line of construction hardware with unique software solutions based on our extensive engineering expertise. They were all developed to let you add more value to the design process and help you grow your business.

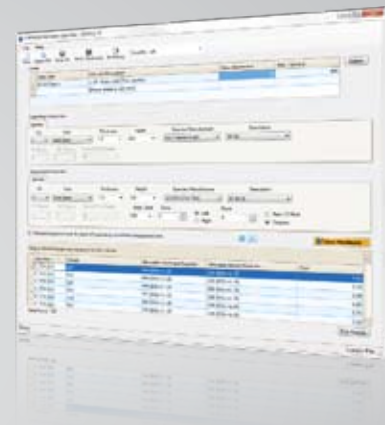
Our new on-line ordering system allows you to purchase the hardware you need with just a few clicks.

- On-line ordering saves you time.
- Compare parts easily using the cross reference.
- All orders are confirmed via email.
- Order whenever you want with 24/7 access.

Select the exact construction hardware you need with - ITW BCG Hardware Specifier. Finally a software program that gives you exact answers to your hardware specifying questions.

- Uses actual load case details.
- Supports multiple load cases.
- Considers an unlimited number of grades and species of solid-sawn lumber, as well as engineered wood products.
- Displays connections that work based on downward and upward reaction values.

Go on-line to place your next order, download your complimentary copy of the Hardware Specifier and the latest ITW BCG Hardware Catalog at itwbcghardware.com.



ITW BCG Hardware

a division of ITW Building Components Group

800.521.9790 - itwbcghardware.com

For reader service, go to www.sbcmag.info/itw.htm

STRUCTURAL BUILDING **COMPONENTS**TM

THE FUTURE OF FRAMING

www.sbcmag.info

Dear Reader:

Copyright © 2011 by Truss Publications, Inc. All rights reserved. For permission to reprint materials from **SBC Magazine**, call 608/310-6706 or email editor@sbcmag.info.

The mission of **Structural Building Components Magazine (SBC)** is to increase the knowledge of and to promote the common interests of those engaged in manufacturing and distributing of structural building components to ensure growth and continuity, and to be the information conduit by staying abreast of leading-edge issues. SBC will take a leadership role on behalf of the component industry in disseminating technical and marketplace information, and will maintain advisory committees consisting of the most knowledgeable professionals in the industry. The opinions expressed in SBC are those of the authors and those quoted solely, and are not necessarily the opinions of any affiliated association (SBCA) .



6300 Enterprise Lane • Suite 200 • Madison, WI 53719
608/310-6706 phone • 608/271-7006 fax
www.sbcmag.info • admgr@sbcmag.info