

# Wood Truss Systems inc.

MANUFACTURERS' REPRESENTATIVES

Truss and wood component machinery experts for over 30 years. We can help you enter the component industry or refine your existing facility with custom equipment solutions featuring:

## New & Used

- ▲ Truss Production Equipment
- ▲ Wall Panel Framing Equipment
- ▲ Automatic & Manual Cutting Equipment: Component, Radial Arm, Linear Single Blade Saws
- ▲ Plant Layouts / Production Consultants
- ▲ Automated Jigging Systems
- ▲ Automated Mesuring Devices
- ▲ Replacement Production Surfaces

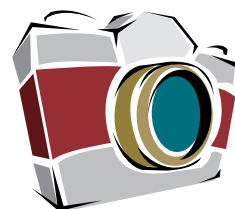
*Count on effective, economical and timely solutions.*

[www.WoodTrussSystems.com](http://www.WoodTrussSystems.com)

888.288.WTSI (9874)



For reader service, go to [www.sbcmag.info/wts.htm](http://www.sbcmag.info/wts.htm).



## Parting Shots

Share your stories and photos with us! Send submissions to [partingshots@sbcmag.info](mailto:partingshots@sbcmag.info).



Just after BCMC 2009, Gary Weaver led a group hike through the Grand Canyon—the perfect way to end a long week. This year MiTek organized a group run through Charlotte to build energy going into the show. Dubbed the Trolley Run of Charlotte 2010, organizer Joe Kannapell said though it wasn't their first run, it was just more organized than ever. "For the first time we pre-measured a great 5k course, challenged MiTek associates in advance, and assembled 20 runners and walkers with a wide range of abilities. It's nice to see another beautiful side of our convention venue."

"We were treated to a wide, flat, out-and-back route, adjacent to quaint trolley tracks," he said. Each participant was rewarded with 2010 BCMC 5k T-Shirts upon their return to the Westin Hotel.

Kannapell hopes to continue the tradition and has even started planning the 2011 event. "The next morning ProBuild and ITW runners joined our crew, encouraging us to open up the Canal Run of Indianapolis 2011 to an even broader audience," said Kannapell. For more new BCMC traditions like this one, visit [www.sbcmag.info](http://www.sbcmag.info) to view a recap of BCMC 2010. **SBC**

## Serving the Truss Industry Since 1987

New & Used Models in Stock



For over 20 years, Lakeside Trailer has led the way in the component trailer industry with innovative ideas to assure your delivery operations remain efficient in today's competitive market. With more than 1700 truss trailers to our credit, Lakeside has perfected ways to reduce or eliminate your transportation concerns.

# LAKESIDE

TRAILER MANUFACTURING, INC.

573/736-2966 • 573/736-5515 fax

[www.rollerbed.com](http://www.rollerbed.com) • [lee@rollerbed.com](mailto:lee@rollerbed.com)

For reader service, go to [www.sbcmag.info/lakeside.htm](http://www.sbcmag.info/lakeside.htm).



THE KOSKOVICH COMPANY  
Automation that works.

# REACH FOR EXCELLENCE

Take Your Plant to New Heights with SCORE



"In order to succeed, our customers need to know they can count on us to provide what's needed. Working with SBCA and becoming SCORE certified proves we are committed to excellence."

- Steve Kennedy, Engineer/Training Manager, Lumber Specialties

Set your company apart with SCORE's certification program that incorporates all of SBCA's education and training programs - helping you implement cost-effective industry best practices. Learn more about options and how to get started at [www.sbcindustry.com/score.php](http://www.sbcindustry.com/score.php).



### SCORE Elite

**ProBuild Manufacturing**  
[www.probuild.com](http://www.probuild.com)

Anchorage, AK	Pooler, GA	Clackamas, OR
Big Lake, AK	Hawarden, IA	Mitchell, SD
Chugiak, AK	New Hampton, IA	Buda, TX
Kenai, AK	Indianapolis, IN	Carrollton, TX
National City, CA	Valley Center, KS	Mercedes, TX
Dolores, CO	Dry Ridge, KY	West Point, VA
Longmont, CO	Wadena, MN	Auburn, WA
Lady Lake, FL	Albemarle, NC	Walla Walla, WA
Milton, FL	Albuquerque, NM	West Richland, WA
Plant City, FL	Berlin, NJ	Spokane, WA
Norcross, GA	Delaware, OH	De Pere, WI

**Shelter Systems Limited**  
[www.sheltersystems.com](http://www.sheltersystems.com) • Westminster, MD

**Sun State Components of Nevada, Inc.**  
[www.sunstatenv.com](http://www.sunstatenv.com) • North Las Vegas, NV

### SCORE Leaders

**Capital Structures**  
[www.capstructures.com](http://www.capstructures.com)  
Fort Smith, AR

**Dakota Craft Truss**  
[www.dakotacraft.com](http://www.dakotacraft.com)  
Rapid City, SD

**Lumber Specialties**  
[www.lbrspec.com](http://www.lbrspec.com)  
Dyersville, IA • Story City, IA

**Plum Building Systems, LLC**  
[www.plumbuildingsystemsinc.com](http://www.plumbuildingsystemsinc.com)  
West Des Moines, IA

**True House, Inc.**  
[www.truehouse.com](http://www.truehouse.com)  
Jacksonville, FL

**Truss Craft**  
[www.trusscraft.com](http://www.trusscraft.com)  
Cheyenne, WY

### SCORE Achievers

**Latco Structural Components**  
[www.latcoinc.com](http://www.latcoinc.com)  
Lincoln, AR

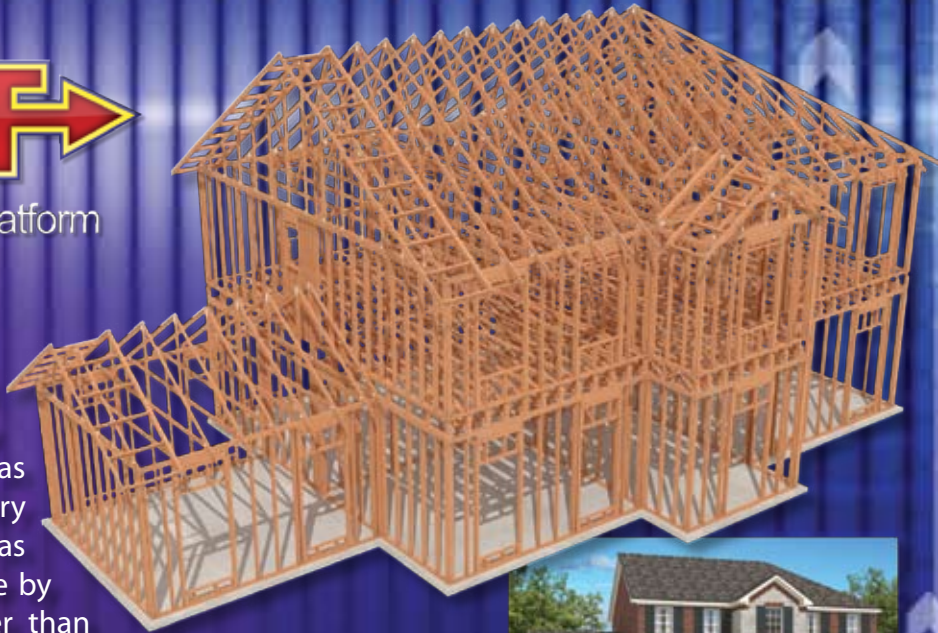
**Tri-County Truss, Inc.**  
[www.tricountytruss.com](http://www.tricountytruss.com)  
Burlington, WA

**Truss Systems, Inc.**  
[www.trussystemsinc.com](http://www.trussystemsinc.com)  
Oxford, GA



# CONNECT

with ITW's Building Design Platform



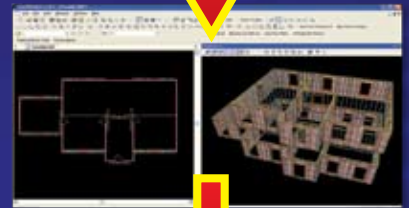
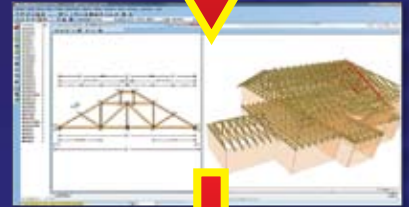
It has been estimated that a typical structure is completely redrawn by construction professionals as many as seven times before it is ever built! Industry experts agree that designers could save as much as 30 to 60 percent of design time by building on work already done - rather than restarting each step from a blank page. Clearly, bringing the industry together would speed the overall process and help create more end-user value. So what is the solution? Instead of offering a one-size-fits-all program that does everything for everyone - it makes more sense to build tools that allow professionals to work together and keep the programs they need to do their specialized jobs. By collecting the output of all design work into one three-dimensional file we could cut design time substantially and all but eliminate field surprises. The resulting 3D file would be a virtual proof of the finished building!

The good news is that ITW BCG began work on this project years ago, and has solutions in place so that you could help lead this revolution - RIGHT NOW. ITW BCG software ties the industry together using our 3D file exchange format called ModelMap. It also gives designers the additional benefit of real-time exchange of model information between ITW BCG programs. That allows ITW Customers to work faster and add even more value.

Call us today to see how you can save time and money!



*ITW BCG demonstrated our software's interconnectivity at the 2010 BCMA show.*



**ITW** Building Components Group  
800.521.9790 - [www.itwbcg.com](http://www.itwbcg.com)

For reader service, go to [www.sbcmag.info/itw.htm](http://www.sbcmag.info/itw.htm)

# STRUCTURAL BUILDING **COMPONENTS**<sup>TM</sup>

THE FUTURE OF FRAMING

[www.sbcmag.info](http://www.sbcmag.info)

Dear Reader:

Copyright © 2010 by Truss Publications, Inc. All rights reserved. For permission to reprint materials from **SBC Magazine**, call 608/310-6706 or email [editor@sbcmag.info](mailto:editor@sbcmag.info).

The mission of **Structural Building Components Magazine (SBC)** is to increase the knowledge of and to promote the common interests of those engaged in manufacturing and distributing of structural building components to ensure growth and continuity, and to be the information conduit by staying abreast of leading-edge issues. SBC will take a leadership role on behalf of the component industry in disseminating technical and marketplace information, and will maintain advisory committees consisting of the most knowledgeable professionals in the industry. The opinions expressed in SBC are those of the authors and those quoted solely, and are not necessarily the opinions of any affiliated association (SBCA).



6300 Enterprise Lane • Suite 200 • Madison, WI 53719  
608/310-6706 phone • 608/271-7006 fax  
[www.sbcmag.info](http://www.sbcmag.info) • [admgr@sbcmag.info](mailto:admgr@sbcmag.info)