

Wall Panel Opportunities Come In Many Sizes.

Whatever your opportunity, we can custom-build the equipment that will help you meet it. Whether it's a 16' sheathing station or a 70' squaring table like the one we recently shipped to a Canadian plant. Custom equipment to fit your circumstance provides manufacturing efficiencies to make your products competitive. In tight markets where you need to look at everything, the answers will be in the small details that add up to controlling your costs.

These machines were custom built to fit each customer's needs in their plants:



- **Wall Framers**
 - Telescoping arms for variable wall height
 - No "step over" mechanisms to trip workers
 - Pop up skate conveyors for easy wall transfer



- **Combination Table - frame, square & sheath in one table**
 - Telescoping arms for variable wall height
 - 2x4 or 2x6 wall capability
 - Manual or optional powered tool bridge drive



- **Single or Dual Tool Beam Sheathing Bridges**
 - 2x4 or 2x6 capability
 - Staple or nail options, optional edge stitcher
 - Manual or optional powered tool bridge drive

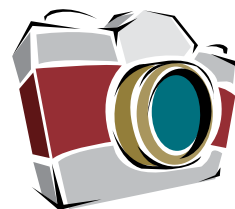


- Custom built 95 feet of expanded wall panel capability with Dual Tool Beam and Dual Top & Bottom Nailers (builds up to 76' wall)

PANELS PLUS
Wall Framing Made Simple

For Information
866.726.7587 or www.panplus.com

For reader service, go to www.sbcmag.info/panelsplus.htm



Parting Shots

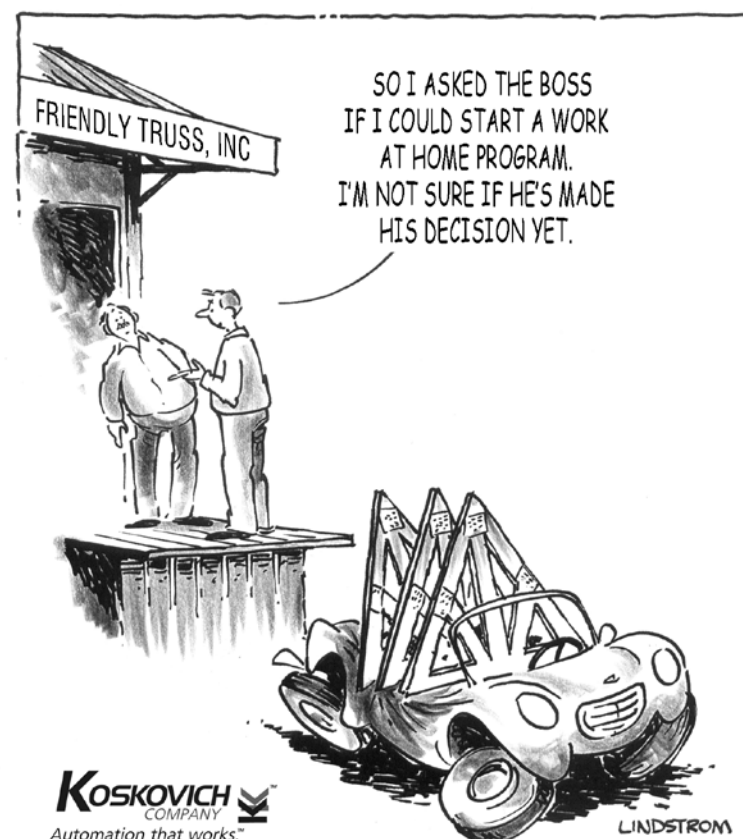
Share your stories and photos with us! Send submissions to partingshots@sbcmag.info.



For seven hikers, BCMC ended with an exciting journey to one of the greatest western landmarks. Gary Weaver from Timber Tech Texas organized a 16-mile daylong hike into the Grand Canyon... dipping their toes in the Colorado River at the bottom. An avid trekker who has hiked the Canyon trails many times, Weaver invited BCMC attendees to join him on the 14-hour hike starting at the South Kaibab trailhead on the Saturday after the show.

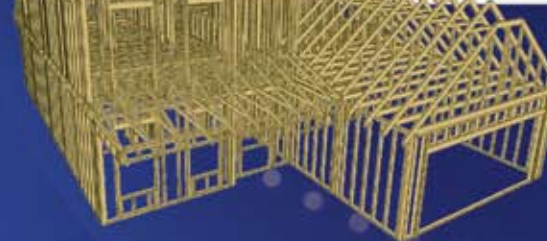
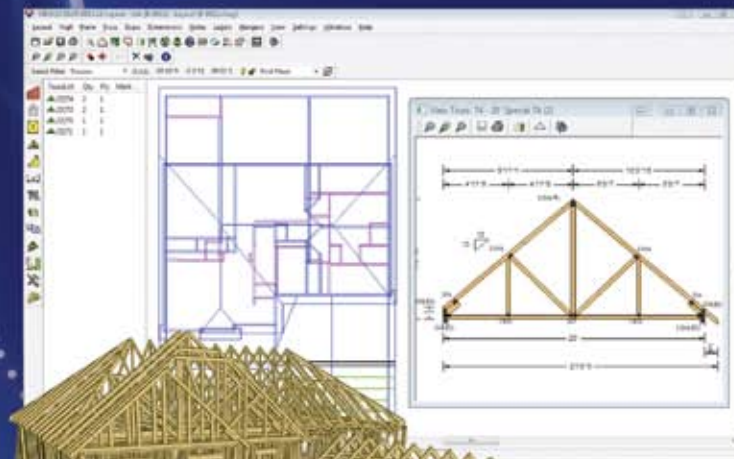
Pictured at left (from left to right) is Keith Lindemulder, Sonet LeRoux, Gary Weaver and Todd Drummond. Hikers Phil Adams, Greg Leslie and Ed Williams are pictured at right. Friend Jim Mavrakes caught up with the group at the trailhead to take their pictures early in the morning. Weaver is extremely proud of the event: "It was a mixture of pain, glorious views, pain, excitement, pain, fun."

The group finished their climb out of the Canyon on Bright Angel Trail a little after sunset. "We are feeling the truss business is not so difficult after all," Weaver wrote. Nothing like a trip to the Grand Canyon to put 2009 into perspective. **SBC**



KOSKOVICH
COMPANY
Automation that works.

Connections for your digital life



These days, the construction industry has never been more ready for new ways to save time and money. Seems everyone is looking for any advantage to help win more bids and insure a profit. While it is true that optimizing current systems and software will help in smaller ways, for a bigger impact we will have to expand our industry's reach. What's needed is a fresh perspective, from a company progressive enough to be

involved in every major part of the construction industry - with the vision and resources to re-align existing business tools and create the missing links to tie everything together - so that a real revolution can take place.

By connecting all the parts, and all the players, with powerful new software tools, that easily communicate ideas up and down the value stream - ITW Building Components Group is building new ways to share knowledge, not just data!

See how ITW BCG helps you connect all the dots - from the first design step, to engineering, to fabrication and beyond!

Watch the ITW BCG presentation at www.itwbcg.com/software

ITW Building Components Group

800.735.8055 | www.itwbcg.com

Truss Software - Engineering - Connectors Truss Cutting & Fabrication Equipment Wall Panel Software & Equipment Canadian Products & Services Trimmable Floor Truss System Cold-formed Steel Truss System Architectural Design Software Design & Manufacturing Software Wall Panel Fastening Systems



Connector Division 800.521.9790 itwbcg.com	Alpine Equipment 800.755.6005 alpineequip.com	Intelligent Building Systems 866.204.8046 intelbuildsys.com	Alpine Systems 905.417.2766 alpinetech.com	SpaceJoist TE 800.238.8678 spacejoist.com	TrusSteel 888.565.9181 trussteel.com	Ameri-CAD VisionREZ 972.747.7880 visionrez.com	hsbCAD 514.428.1444 hsbcad.com	Panel Fastening Systems 888.726.3577 itwpfs.com
--	--	--	--	---	---	---	--	---

For reader service, go to www.sbcmag.info/itw.htm

STRUCTURAL BUILDING **COMPONENTS**TM

THE FUTURE OF FRAMING

www.sbcmag.info

Dear Reader:

Copyright © 2009 by Truss Publications, Inc. All rights reserved. For permission to reprint materials from **SBC Magazine**, call 608/310-6706 or email editor@sbcmag.info.

The mission of **Structural Building Components Magazine (SBC)** is to increase the knowledge of and to promote the common interests of those engaged in manufacturing and distributing of structural building components to ensure growth and continuity, and to be the information conduit by staying abreast of leading-edge issues. SBC will take a leadership role on behalf of the component industry in disseminating technical and marketplace information, and will maintain advisory committees consisting of the most knowledgeable professionals in the industry. The opinions expressed in SBC are those of the authors and those quoted solely, and are not necessarily the opinions of any affiliated association (SBCA) .



6300 Enterprise Lane • Suite 200 • Madison, WI 53719
608/310-6706 phone • 608/271-7006 fax
www.sbcmag.info • admgr@sbcmag.info