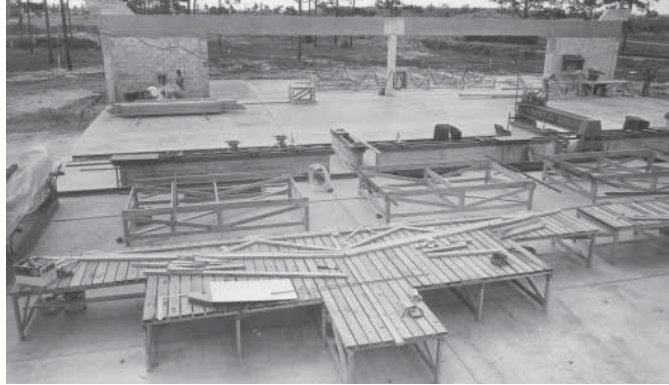




Parting Shots

Share your stories and photos with us! Send submissions to partingshots@sbcmag.info.



40 Years in the Life of a Scrapbook

There's no shortage of industry relics out there. Take, for instance, the old dust-covered "scrapbook" that Glenn Gelatt of Space Coast Truss Inc. and president of SFTCMA has in his possession. Put together some time in the late 1960s by Gelatt's father Marvin, the book contains historical gems such as a yellowed estimate sheet, hand-drawn truss drawings, and 8x10 black and white photos that tell an interesting story.

As shown in these pictures, the equipment in this south Florida "truss plant" was installed on a cement slab before the facility was enclosed in 1966. Marvin, an architect by trade, supervised building of the plant at the time, and took special care to document the building process. But this facility was no run of the mill truss plant. In fact, it wasn't a truss plant at all! Glenn explained that the property was owned by

Sanford Industries, and the plant was built to demo Sanford equipment to prospective buyers. Outfitted with the now legendary Sanford roller gantry perfected just a few years prior to 1966, you can see that workers used the installed equipment to build the 106' clear span trusses. The long-span trusses were then hoisted and set overhead in three pieces. "When owned by Sanford, this facility was used strictly for machine demos; it wasn't a fully operational truss plant," Glenn told *SBC* staff, noting that the plant is now owned and run by a component manufacturer.

When Marvin left Sanford for another job, he saved the scrapbook he had made years earlier and eventually passed it on to Glenn, who kindly lent it to a curious WTCA staff member who spotted it on his desk during a visit to Space Coast. Makes us wonder: what treasures do you have on your desk? *SBC*

OH ... THE PLANT SUPERVISOR IS OUT TO A "CONGRATULATORY LUNCH" WITH THE OWNER TODAY ... FOR SAVING OVER \$100 ON THE PLANT'S HEAT BILL LAST MONTH.



THE KOSKOVICH COMPANY
Automation that works.

UNSTREIN

Information is Power

Get The Big Picture With e-SHOP



Real-time truss plant management tools

- Manage costs with better information
- Increase productivity
- Track your people, equipment, lumber and material more efficiently
- Have accurate material inventory and projections — at your fingertips, instantly!
- Customize production, inventory and manpower reports

With e-SHOP, we have a clearer picture of production. And the increase in productivity is amazing!

*Danny Dunham, Special Projects Coordinator, Raymond Building Supply
Ft. Myers, Florida*

Want more information?

Learn how e-SHOP gives you the power manage people, material and machinery more efficiently — and productively.

Schedule a free consultation and arrange a visit to your plant by an e-SHOP consultant.

Simply call Doug Snow at 800-786-5006, ext. 4035.

E-mail: DSnow@www2.alpeng.com



ITW Building Components Group Inc.

P.O. Box 2225 – Pompano Beach, FL 33061 – 800.735.8055

www.itwbcg.com

STRUCTURAL BUILDING **COMPONENTS**TM

THE FUTURE OF FRAMING

www.sbcmag.info

Dear Reader:

Copyright © 2007 by Truss Publications, Inc. All rights reserved. For permission to reprint materials from **SBC Magazine**, call 608/310-6706 or email editor@sbcmag.info.

The mission of **Structural Building Components Magazine (SBC)** is to increase the knowledge of and to promote the common interests of those engaged in manufacturing and distributing of structural building components to ensure growth and continuity, and to be the information conduit by staying abreast of leading-edge issues. SBC will take a leadership role on behalf of the component industry in disseminating technical and marketplace information, and will maintain advisory committees consisting of the most knowledgeable professionals in the industry. The opinions expressed in SBC are those of the authors and those quoted solely, and are not necessarily the opinions of any affiliated association (WTCA) .



6300 Enterprise Lane • Suite 200 • Madison, WI 53719
608/310-6706 phone • 608/271-7006 fax
www.sbcmag.info • admgr@sbcmag.info