



# Wtca Update

## Open Quarterly Meeting Highlights: February 23, 2007 • Jacksonville, FL

The year kicked off with a number of policy updates and new directives for WTCA.

by Libby Maurer

The first Open Quarterly Meeting (OQM) of 2007 was called to order by WTCA President Barry Dixon. The minutes from the October 2006 OQM were approved.

### 2007 Open Quarterly & Board Meeting Schedule

During the review of the remaining Open Quarterly and Board Meeting Schedules, Dixon opened discussion on the October 6 Board Meeting that follows BCMC. **The Board unanimously passed the motion to move the October Board Meeting to the evening of Friday, October 5, to coincide with the Top Chord Club Dinner.**

Remaining OQMs for 2007 are scheduled as follows:

- **August 15-17:** Holiday Inn Golden Gateway, San Francisco, CA
- **October 5:** Columbus, OH

### WTCA Policies Review

Staff reviewed the recommendations of the WTCA Policy Review Subcommittee, including the adoption of policies affecting photographs taken at BCMC and Industry Award acknowledgements. The subcommittee also recommended that certain policies be retired, due to being out of date. **The Board unanimously passed the motion to approve the recommendations.**

### WTCA Bylaws Update

Kent Pagel reviewed changes to the WTCA Bylaws, revised to reflect the WTCA name change in 2006. Minor changes were made to reflect the council formation process and the testing facility. **The Board unanimously passed the motion to approve the changes to the WTCA Bylaws.**

### Executive Committee Report

Staff discussed the progress of the testing facility construction and the creation of the Structural Building Components Research Institute (SBCRI). WTCA is providing the capital investment for facility operations. WTCA and TPI have agreed to undertake industry testing jointly. For 2007 the industry testing budget will be \$500,000—\$250,000 from each organization. WTCA and TPI have an agreement to continue to jointly fund industry testing through 2011. The SBCRI grand opening will be June 28 to coincide with the TPI Board Meeting. Visit [www.sbcindustry.com/testing\\_facility.php](http://www.sbcindustry.com/testing_facility.php) for more information.

**BCMC Floor Plan Policy:** The Executive Committee recommended a change to the BCMC Floor Plan Policy.

### UPDATE TO EXECUTIVE COMMITTEE BCMC FLOOR PLAN POLICY

(Recommended change in bold below):

*The four truss plate manufacturers that contract for the largest amount of show floor space, individually or collectively with their business partners, shall form the BCMC anchor booths. Each anchor booth will occupy one of the four (4) outside corners of the BCMC show floor.*

*Anchor booth exhibitors that are owned by the same company should be placed in outside corners on the same side of the convention center. Each year the anchor booth exhibitors will flip sides. Anchor booth exhibitors will determine who should be placed in the front and back of the hall.*

*The show floor, as much as is possible, will be set with several hallways going completely east and west and completely north and south to accommodate good show floor flow and booth visibility and access. The more wide-open booths (typically 20x20, 20x30, 30x30, etc. booth sizes) will be sited near the front and middle of the show floor to allow for reasonable sight lines to each of the anchor booths.*

*Final exhibitor show floor placement will be made in concert with the location of show offices, show suites, meeting rooms, etc. whenever possible.*

**The motion to approve the updated BCMC Floor Plan Policy was passed unanimously.**

### BCMC Report

BCMC 2007 will be held in Columbus, OH on October 3-5. Exhibitor booth fees will not increase for 2007. The theme for BCMC 2008 in Denver, CO on October 1-3 will be "Mile High Performance."

### SBC Magazine Update

WTCA staff reported that 2007 is off to a great start and *SBC Magazine* continues to undertake several industry projects of importance to our association and each member. Advertising sales for 2006 were up 13 percent over 2005, and staff thanked all the advertisers.

### WTCA Committees Motions

#### Legislative Committee

**Proposed Policy: Innocent Sellers Fairness Act (ISFA) – H.R. 989**  
*WTCA supports passage of the Innocent Sellers Fairness Act (ISFA), as it holds sellers of products responsible in proportion to their wrongdoing, and provides protection from liability for damages that the seller did not cause. WTCA members are encouraged to participate in grassroots legislative advocacy efforts to build support for ISFA.*

**The motion to approve the proposed policy on the ISFA legislation was unanimously approved.**

#### Proposed Policy: Workforce Training

*WTCA believes that in order for manufacturers to remain competitive in the global economy, America needs to do more to educate and train the workforce of today and tomorrow. WTCA members are encouraged to participate in grassroots legislative advocacy efforts to build support for legislation that will provide more diverse education/training opportunities, additional funds for employee training grants and greater access to new and existing grants of this kind.*

**The motion to approve the proposed policy on Workforce Training passed unanimously.**

#### Membership Committee

**Proposed Policy: Participation in HBA Code Committee Meetings**  
*Local, state and national building code changes are being used by a variety of interest groups to advance marketplace interests and agendas that, at times, are not in the structural building component industry's best interest.*

## WTCA Board of Directors

### Officers & Executive Committee Reps.

- **President:** Barry E. Dixon • True House, Inc. dba True Truss • 904/757-7500 • [barry@truehouse.com](mailto:barry@truehouse.com)
- **President Elect/Treasurer:** Robert J. Becht • Chambers Truss, Inc. • 772/465-2012 • [bob@chamberstruss.com](mailto:bob@chamberstruss.com)
- **Secretary:** Ben Hershey • Alliance TruTruss, LLC • 602/252-1772 • [bhershey@trustruss.com](mailto:bhershey@trustruss.com)
- **Past President:** Donald Groom • Stark Truss Co., Inc. • 330/478-2100 • [don.groom@starktruss.com](mailto:don.groom@starktruss.com)
- **Kenneth M. Cloyd** • California Truss Co. • 909/657-7491 • [kenc@caltruss.com](mailto:kenc@caltruss.com)
- **Dwight Hikel** • Shelter Systems Limited • 410/876-3900 • [dwhight@sheltersystems.com](mailto:dwhight@sheltersystems.com)
- **Frank B. Klinger** • Mid-Valley Truss & Door Co. • 956/428-7090 • [lftcfbk@aol.com](mailto:lftcfbk@aol.com)
- **Joe Odgers** • Bama Truss & Components, Inc. • 205/669-4188

### At-Large Representatives

- **Dean DeHoog** • Trussway - Central • 616/887-8264
- **Allen Erickson** • Cal-Asia Truss • 925/680-7701
- **David Horne** • Universal Forest Products, Inc. • 800/476-9356
- **John A. Smith** • Foxworth-Galbraith Lumber Co. • 972/437-6100
- **Steven A. Spradlin** • Capital Structures Inc. • 479/783-8666
- **Mike Walsh** • Stock Components • 919/431-1000

### Directors Representing Chapters

- **Phil Adams** • Northwest Building Components, Inc. • 208/687-9490
- **Keith Azlin** • U.S. Components, LLC • 520/882-3709
- **Bruce J. Bain** • Richco Structures • 920/336-9400
- **Clyde R. Bartlett** • Bluegrass Truss Company • 859/255-2481
- **Rick Cashman** • Florida Forest Products • 727/585-2067
- **Mark A. Casp** • Casmin, Inc. • 352/343-0680
- **David A. Denoncourt** • Tibo Lumber Truss Manufacturers • 603/796-2974
- **Jack Dermer** • American Truss Systems, Inc. • 281/442-4584
- **Simon Evans** • Bay Truss Inc. • 510/232-0937
- **James C. Finkenhoefer** • Truss Systems, Inc. • 770/787-8715
- **Joseph D. Hikel** • Shelter Systems Limited • 410/876-3900
- **John Hogan** • Vivco Components • 816/449-2161
- **John Huck** • Home Lumber Company • 303/791-3715
- **David W. Hughes** • Oregon Truss • 503/581-8787
- **Michael Karceski** • Atlas Components, Inc. • 815/332-4904
- **Ted Kolanko, P.E.** • 84 Components • 615/287-0184
- **Chris Lambert** • Southeastern Materials, Inc. • 704/983-1144
- **Glenn McClendon** • Sun State Components, Inc. • 702/657-1889
- **David Motter, P.E.** • Tri-County Truss • 360/757-8500
- **Richard P. Parrino** • Plum Building Systems • 515/327-0698
- **Michael Redmon** • Carolina Truss Systems, Inc. • 843/875-0550
- **Elias Renteria** • L & P Components • 505/373-8715
- **Mark H. Rose** • Manning Building Supplies, Inc. • 904/268-8225
- **Timothy Rouch** • Gang-Nail Truss Co., Inc. • 559/651-2121
- **Gary Sartor** • Stone Truss Company, Inc. • 760/967-6171
- **Jim Scheible** • Automated Building Components, Inc. • 763/675-7376
- **Pat Shugrue** • Bama Truss & Components, Inc. • 205/669-4188
- **Steven L. Stroder** • Carter-Lee Building Components Inc. • 317/834-5380
- **James M. Swain** • Carpenter Contractors of America • 239/437-1100
- **Terry Tontarski** • Fabco - Tontarski, Inc. • 315/782-5283
- **Dave Walstad** • U.S. Components, Inc. • 609/518-9759
- **Scott Ward** • Southern Components, Inc. • 318/687-3330
- **Stephen Yoder** • Stark Truss Co., Inc. • 330/478-2100

### Associate Member Directors

- **Joe Kusar** • Tolleson Lumber Co., Inc. • 478/987-2105
- **Tom Manenti** • MiTek Industries, Inc. • 314/434-1200
- **Gary O'Malley** • Weyerhaeuser Company • 253/924-2700
- **Tawn A. Simons** • Simpson Strong-Tie Co. • 925/560-9000

Continued on page 24

### at a glance

- ❑ WTCA's bylaws were amended to incorporate the name change approved in 2006.
- ❑ Policies were approved on the topics of Participation in HBA Code Committee Meetings and WTCA Staff Participation in Chapter Board Meetings.
- ❑ The 2007 budget was reviewed and approved.

It is essential that our industry understands what is going on in the local code environment and is tending toward being on the leading edge of key local, state and national building code issues. With this in mind, the WTCA Board requests that each Chapter designate an individual Chapter member and/or an individual WTCA member(s), who is dedicated to attending each state HBA code committee meeting at the frequency that they are held and report back to WTCA on all code related items that affect the structural building components industry.

**Motion to approve the proposed policy on participation in HBA Code Committee meetings passed unanimously.**

**Proposed Policy: WTCA Staff Participation in Chapter Board Meetings**

In an effort to maximize the advantage of the knowledge of both its chapter members and WTCA staff, in a very material and enduring manner, the WTCA Board asks that WTCA staff participate in all periodic Chapter Board/Executive Committee meetings (in person where already in the area, via speaker phone, via conference call, via email, etc.) that the chapter holds. To this end, a suggested approach for each WTCA Chapter to take to formalize this is through a simple by-laws change similar to the section underlined below:

*IV. BOARD OF DIRECTORS*

**SECTION 1. GENERAL POWERS.** *The business and affairs of the Association shall be managed by its Board of Directors.*

**SECTION 2. NUMBER AND TENURE.** *The Board of Directors shall consist of X members. This will include*

*the X officers, and X members elected at large with one being the WTCA Board of Directors representative if that person is not an officer. At large members will be X year terms. The WTCA staff member attending chapter meetings shall be an ex-officio non-voting board member.*

**The motion to approve the proposed policy on WTCA staff participation in Chapter Board meetings passed unanimously.**

**Weekly Board Report Update**

The Board Report is a weekly document created by WTCA staff to inform members on the various projects and tasks accomplished. The Board provided feedback on changes that could be made. The general feeling is that it is a valuable and timely document and should continue to be sent out to the membership. Staff will continue to make improvements to this communication tool.

**Treasurer's Report**

Bob Becht reviewed a financial analysis sheet that was handed out to attendees. In 2006, operating expenses were 11.93% less than budget and operating income was 2.87% less than budget, resulting in a positive variance on the bottom line of 56.33%. Revenue was off due to overall sales of publications in 2006 being down, which could be attributed to the overall economic environment in 2006.

Becht reviewed the 2007 proposed budget. Over the past several years we have budgeted very conservatively on the income side and had a significant positive variance, due to the introduction of several new, successful products and programs. Our expense budget has historically been much more accurate than the revenue budget, since it is easier to track expenses closely. In the coming year, WTCA will strive to invest resources in projects that affect the structural

Continued on page 78

**New WTCA Members**

**REGULAR MEMBERS**

**Braun Building Center**  
3303 Menasha Ave  
Manitowoc, WI 54220-1633  
920/682-0143  
Mr. Keith Neumann  
Sponsor: Mr. Stan Sias

**Building Components of Idaho**  
1102 Franklin Blvd  
Nampa, ID 83687-6754  
208/442-9500  
Mr. Corey Elitharp

**Citadel Building Products, LLC**  
PO Box 470  
Thomasville, GA 31799-0470  
229/226-6440  
Mr. Gary Poole

**JL Schwieters Building Supply/Construction, Inc.**  
13925 Fenway Blvd N  
Hugo, MN 55038-9265  
651/762-1110  
Mr. John Schwieters  
Sponsor: Mr. Stan Sias

**Locust Lumber Co., Inc.**  
PO Box 130  
Locust, NC 28097-0130  
704/888-4411  
Mr. Leon Huneycutt  
Sponsor: Mr. Stan Sias

**Metal Component Truss, Inc.**  
5600 Zip Dr  
Fort Myers, FL 33905  
239/985-0775  
Mr. Larry Burnes  
Sponsor: Mr. Joe Odgers

**Southeastern New Horizon Homes**  
26124 Hwy 21  
Varnado, LA 70467  
985/732-1978  
Mr. Joe T. Nichols, Sr.

**ASSOCIATE MEMBERS**  
**Contractor Classes**  
801 W Bay Dr Ste 516  
Largo, FL 33770-3220  
727/403-1925  
Mr. Steve Terepka

**Dave Joiner, AIBD, CPBD**  
104 Hill Top Dr  
Oneida, TN 37841  
423/569-8559  
Mr. Dave Joiner

**Green-R-Panel Pre-fabricated Building Systems**  
422 North Runnymede Rd Ste 3  
Concord, ON L4K3R5  
514/898-3199  
Mr. Larry Diamond, BCom

**SPIDA Machinery 2000 Ltd.**  
PO Box 6273  
Rotorua 3201 New Zealand  
011/64-7-350-1590  
Mr. Bevan Lines

Listing as of 4/6/07



For more information about WTCA membership, contact Anna (608/310-6719 or astamm@qualtim.com) or visit [www.sbcindustry.com](http://www.sbcindustry.com).

**M SERIES EQUIPMENT**

**WHY BUY USED...**

When you can buy **NEW, comparably priced equipment with a Warranty!**

Visit our web site to see our complete product line

**KLAISLER MFG. CORP.**  
3314 PROSPECT STREET  
INDPLS, IN 46203  
PHONE: 317-357-3890  
WWW.KLAISLER.COM

For reader service, go to [www.sbcmag.info/klaisler.htm](http://www.sbcmag.info/klaisler.htm)

**Bringing the Industry Together**

**WTCA**  
Open Quarterly Meetings

WTCA Open Quarterly Meetings (OQM) are the perfect venue to learn more about the association, network with industry peers and provide your perspective on industry projects.

**Mark your calendars for the remaining 2007 WTCA OQMs:**

**August 15-17 • San Francisco, CA**  
**October 5 • Columbus, OH**

**Visit [www.sbcindustry.com](http://www.sbcindustry.com) for details.**

Welcome to our newest SBC Program Advertiser...

**NTA, Inc.**  
(Bronze Advertiser)

Many thanks for your support!

**WTCA**

Many Thanks to Our TTT Online Training Partners

**Robbins Engineering, Inc.** **Mi MiTek**

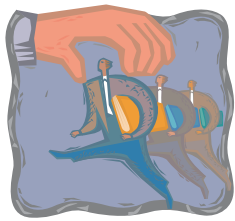
**EAGLE**

**ALPINE** **TRUSWAL SYSTEMS**  
INTELLIGENT BUILDING SOLUTIONS

For details, contact WTCA at 608/274-4849 or visit [www.sbcindustry.com](http://www.sbcindustry.com).

**WTCA**

For reader service, go to [www.sbcmag.info/wtca.htm](http://www.sbcmag.info/wtca.htm)



## Classified Ads

### CARPENTER PENCILS • ARCHITECTURAL RULERS

Carpenter Pencils Printed 7000 16¢ • 10,000 14¢ • 20,000 12¢

Rulers • Fax for Scales, Sizes and Pricing  
L. I. Industries 800/526-6465, Fax 718/793-4316

### PIGGYBACK® 4-WAY FORKLIFT

Now deliver extra long loads to highly congested sites (previously inaccessible) w/ Princeton's unique PiggyBack "4-Way" truck mounted forklift. Designed to move long loads through tight spots, the "4-Way" easily handles EWP, siding & lumber with exceptional stability. Call 800/331-5851 or email sales@piggy-back.com.

### SALES MANAGER & ACCOUNT MANAGER

Wanted Sales Manager and Account Manager for Jacksonville, Florida. 10 million dollar market selling wall panels and roof and floor trusses. Only aggressive, knowledgeable winners will be considered. If you want to be part of a great company and help build a winning team, please email your résumé to [dvail@ufpi.com](mailto:dvail@ufpi.com) or fax to 706/367-8216.

### YOUR AD HERE

A classified ad in *SBC Magazine* is the perfect medium to reach the industry. Plus, when you place a classified ad in *SBC Magazine*, that ad will also be posted as a word-only classified on our web site—at no extra charge! To make a space reservation for your classified ad, call Mindy at 608/310-6729 or email [mcaldwell@sbcmag.info](mailto:mcaldwell@sbcmag.info).

## New Products

**30% Less Cost  
Same Klaisler Quality!**

**M Series  
Floor Truss System**

5'6" Wide x 40' Long  
Table Guided Gantry,  
Quality at an Affordable Price

**KLAISLER MFG. CORP.**  
3314 PROSPECT STREET  
MIDDELEND, IN 46023  
PHONE: 317-357-3886  
WWW.KLAISLER.COM

For reader service, go to [www.sbcmag.info/klaisler.htm](http://www.sbcmag.info/klaisler.htm)

### WTCA Update

Continued from page 24

building components industry in a very positive matter. Specific major project investments were reviewed. Discussion ensued on how WTCA's overall approach to budgeting changed in 2006, with the introduction of an aggressive approach toward estimating revenue more accurately. This approach will continue in 2007, with the organization's overall goal to get to a point of a zero budget on WTCA operations. Then, any revenues from the BCMC show would be carried forward into subsequent years to fund special industry projects. **The Treasurer's Report, including the 2007 Budget, were approved unanimously.**

### Key Industry Supplier Update: Truss Plates and Steel

Tom Manenti reported that the TPI Board re-elected Tom Whatley as President of TPI for 2007. TPI is very excited about the Joint Venture on the SBCRI and looks forward to getting the testing plans established and beginning the 2007 industry testing. TPI anticipates publication of the next edition of ANSI/TPI-1 by the end of the year. Finally, Manenti advised of the continuing zinc shortage and the resulting rise in the cost of domestic steel and further indicated that suppliers have been able to find off-shore sources to keep the prices stable in the past months.

### Key Industry Supplier Update: Connector Industry/Steel

Tawn Simons reported that some key legacy ICC-ES evaluation reports for the connector industry will sunset in the near future. Updating these code reports will require significant re-testing and there is the very real potential for changes in the performance ratings of a variety of connectors as a result.

### Member, Chapter & Supplier Roundtable Discussion

Joe Odgers provided an update on the Cold Formed Steel Council (CFSC) and encouraged attendance at the Annual Workshop & Conference. He spoke about his experience in the complementary nature of working with both steel and wood components.

Mark Rose talked about proposed changes to the Florida building code due to prior high-wind storms. He asked WTCA to help them address these code changes and will work with staff who has been very involved in the Florida building code change process. **SBC**

*The next OQM will be August 15-17 in San Francisco, CA. For more information or to register, visit [www.sbcindustry.com/oqm.php](http://www.sbcindustry.com/oqm.php). All are welcome to attend!*



In an ongoing effort to educate our members and their customers about the importance of temporary restraint and bracing during truss installation, WTCA is looking for high quality photographs of proper restraint and bracing in action

on the jobsite. For a review of proper installation and temporary restraint/bracing techniques, take a look at chapter 2 of the BCSI booklet or the BCSI-B2 Summary Sheet. PDFs of both documents are available to view at [www.sbcindustry.com/bcsi.php](http://www.sbcindustry.com/bcsi.php).

For more information or to submit photos, contact Emily Patterson at 608/310-6747 or email [epatterson@qualtim.com](mailto:epatterson@qualtim.com).

**WTCA • 608/274-4849 • [www.sbcindustry.com](http://www.sbcindustry.com)**

For reader service, go to [www.sbcmag.info/wtca.htm](http://www.sbcmag.info/wtca.htm)

# STRUCTURAL BUILDING COMPONENTS™

THE FUTURE OF FRAMING

[www.sbcmag.info](http://www.sbcmag.info)

Dear Reader:

Copyright © 2007 by Truss Publications, Inc. All rights reserved. For permission to reprint materials from **SBC Magazine**, call 608/310-6706 or email [editor@sbcmag.info](mailto:editor@sbcmag.info).

The mission of **Structural Building Components Magazine (SBC)** is to increase the knowledge of and to promote the common interests of those engaged in manufacturing and distributing of structural building components to ensure growth and continuity, and to be the information conduit by staying abreast of leading-edge issues. SBC will take a leadership role on behalf of the component industry in disseminating technical and marketplace information, and will maintain advisory committees consisting of the most knowledgeable professionals in the industry. The opinions expressed in SBC are those of the authors and those quoted solely, and are not necessarily the opinions of any affiliated association (WTCA) .



6300 Enterprise Lane • Suite 200 • Madison, WI 53719  
608/310-6706 phone • 608/271-7006 fax  
[www.sbcmag.info](http://www.sbcmag.info) • [admgr@sbcmag.info](mailto:admgr@sbcmag.info)