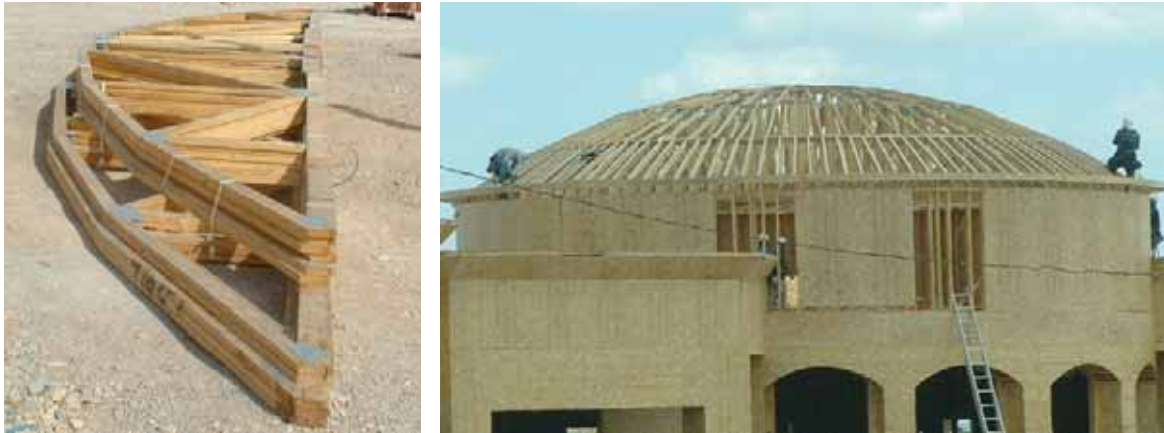


## Parting Shots

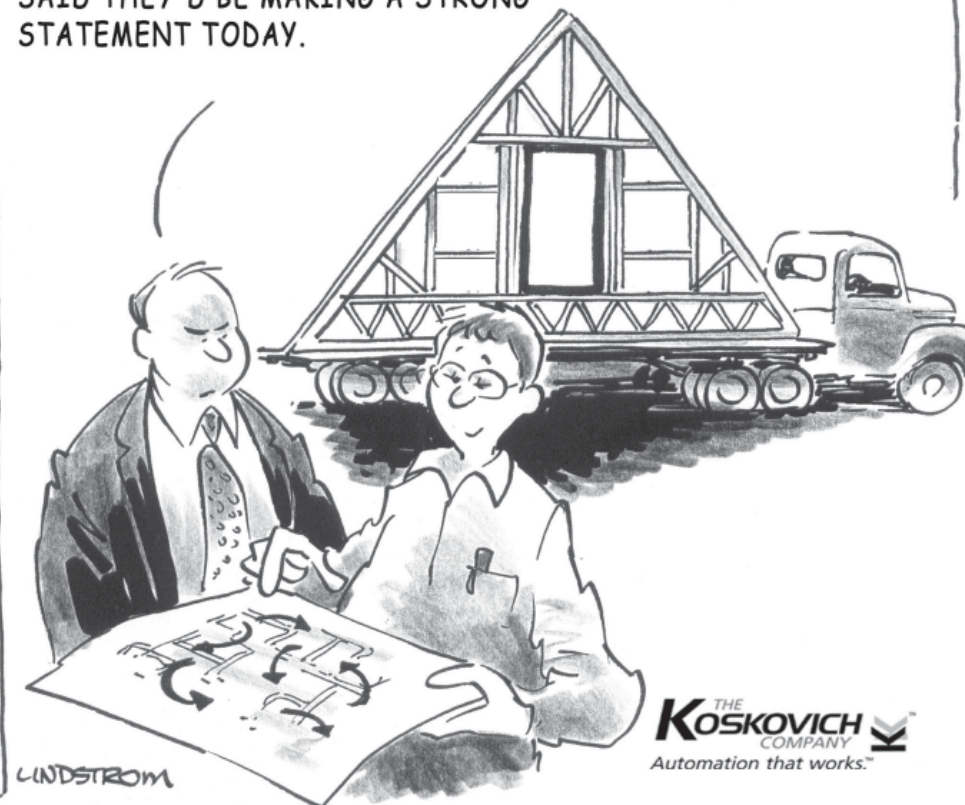
Share your stories and photos with us! Send submissions to [partingshots@sbcmag.info](mailto:partingshots@sbcmag.info).



This recently completed retail building in Las Vegas, NV features bow-string trusses. Justin Henricksen, a truss technician in the Las Vegas area, designed the trusses for the domed structure. Henricksen says he has been seeing quite a few requests for the bow-string trusses, although this one was their biggest so far at 58'. He commented, "Everybody wants to do these round towers, it seems to be the norm right now."

One thing that stood out about this project was that the roof is copper. Justin explained that most of the time copper sheathing will have ridges and ripples when applied, but the architect for this project wanted it to be smooth, which meant that the sheathing had to be perfect. "The roof had to be really smooth, so we sheathed it twice, once in different directions each way, so that it could be as smooth as possible for the copper sheathing to be applied." **SBC**

THE WORKERS SAY IT'S CONFUSING ... THEY DON'T LIKE BEING SWITCHED AROUND FROM BUILDING PANELS TO BUILDING ROOF TRUSSES TO BUILDING FLOOR TRUSSES. SAID THEY'D BE MAKING A STRONG STATEMENT TODAY.



*For the bold, the future is always filled with opportunities.*

## Take charge of change...



ITW Building Components Group Inc. unites the best brands in the residential and commercial construction industries: Alpine, Truswal, TrusSteel, Intelligent Building Systems, Alpine Structural Consultants, SpaceJoist TE, Alpine Equipment and ITW.

We share a commitment to producing world-class products, offering knowledgeable service and supporting our customers every step of the way.

Get exactly the resources you need to stay in charge of your changing world — right now!



**ITW Building Components Group, Inc.**

Call your ITW Building Components Group Inc. representative or visit [www.itwbcg.com](http://www.itwbcg.com) today.

For reader service, go to [www.sbcmag.info/alpine.htm](http://www.sbcmag.info/alpine.htm). See additional ad on pages 58-59.

# STRUCTURAL BUILDING **COMPONENTS**<sup>TM</sup>

---

THE FUTURE OF FRAMING

[www.sbcmag.info](http://www.sbcmag.info)

Dear Reader:

Copyright © 2007 by Truss Publications, Inc. All rights reserved. For permission to reprint materials from **SBC Magazine**, call 608/310-6706 or email [editor@sbcmag.info](mailto:editor@sbcmag.info).

The mission of **Structural Building Components Magazine (SBC)** is to increase the knowledge of and to promote the common interests of those engaged in manufacturing and distributing of structural building components to ensure growth and continuity, and to be the information conduit by staying abreast of leading-edge issues. SBC will take a leadership role on behalf of the component industry in disseminating technical and marketplace information, and will maintain advisory committees consisting of the most knowledgeable professionals in the industry. The opinions expressed in SBC are those of the authors and those quoted solely, and are not necessarily the opinions of any affiliated association (WTCA) .



6300 Enterprise Lane • Suite 200 • Madison, WI 53719  
608/310-6706 phone • 608/271-7006 fax  
[www.sbcmag.info](http://www.sbcmag.info) • [admgr@sbcmag.info](mailto:admgr@sbcmag.info)