



# Wtca Update

## WTCA Management Notes Now Available

Learn more about the latest tool from WTCA.

by WTCA Staff

Last month you learned about *Tech Notes*; this month *Management Notes* are taking center stage. WTCA's new *Management Notes* address critical issues that component manufacturers face in the operation of their business.

*Management Notes* mimic the format of *Tech Notes* in that sections of the document are organized into the Background, Issue, Analysis and Conclusion of a particular topic. As its name might suggest, the scope of topics covered in *Management Notes* will differ significantly. For instance, while *Tech Notes* are often used to address design responsibility issues, *Management Notes* cover topics that relate to risk management, human resources practices, citation avoidance, transportation regulation, safety and other business operations.

Component manufacturers are encouraged to use *Management Notes* to educate regulatory groups and other outside entities in the marketplace on the industry's interpretation of regulations, laws and codes.



*Management Notes* cover topics that relate to risk management, human resources practices, citation avoidance, transportation regulation, safety and other business operations.

The first ever *Management Note*, titled "California Wall Panel Transport & Permit Process," addresses a recent interpretation of the law by a California Highway Patrol (CHP) officer and citation over optimal load positioning of wall panels and the necessity of a non-divisible over width load permit. While the component manufacturer was successful in defeating the citation in court, the CHP officer claimed he did not agree with the ruling and would continue to issue citations to vehicles hauling wall panels loaded in the horizontal position.

This document, sponsored by the California Engineered Structural Component Association (CalESCA), discusses wall panel production and outlines the industry's concerns regarding wall panel handling and transport. It further discusses the industry's understanding of California Vehicle Code (CVC) and statute by clearly outlining the reasons that wall panels should continue to be transported horizontally when utilizing a flat-bed trailer.

A popular topic for component manufacturers is records retention, which is currently in development. Component manufacturers have also expressed a need for *Management Notes* addressing these topics: sawdust generation and collection, storm water management plans, new employment reporting requirements under the Social Security Administration, employee overtime regulations, and a hearing test requirements guide. Visit [www.sbcindustry.com/mgmtnotes.php](http://www.sbcindustry.com/mgmtnotes.php) to view new *Management Notes*. **SBC**

*Is your chapter or company challenged with a marketplace or business issue that could be covered in a Management Note? If so, contact Sean Shields, [sshields@quallim.com](mailto:sshields@quallim.com).*

### WTCA Creates...

Madison, WI - WTCA is pleased to announce the formation of its Cold Formed Steel Council (CFSC). Comprised of steel component manufacturer members of WTCA, CFSC will focus on protecting and advancing the structural building component industry with a special emphasis on steel component manufacturing issues.



"This will be the most beneficial move the cold formed steel business has seen," said Joe Odgers, Sales Manager for Bama Truss & Components, Inc. and CFSC co-chair. "Creating the council and working with WTCA offers members the opportunity to participate in key WTCA committees, network with component manufacturers on common issues, and have access to tools and resources for steel component manufacturers that are unprecedented."

The goal of CFSC (and WTCA) is to create a fence of protection around component manufacturers through risk management and education. The new council will offer a host of services that build off of the work that the structural building component industry has been working on including: risk management tools; *Technical Notes* providing assistance on building codes, professional engineering laws and design responsibilities; the annual Building Component Manufacturers Conference; the SBC Legislative Conference; approved insurance broker programs, and coverage of steel-related issues in *Structural Building Components Magazine*. New services that will soon be available include: online training; steel-focused Building Component Safety Information (BCSI) series publications; and an In-Plant CFSC Quality Control program.

"The time is right to start CFSC," said Odgers. Outlining the united front the industry now has on key issues that face all component manufacturers, he added, "The market has matured over the past few years, and the cold formed steel business is here to stay. Being a wood and steel component manufacturer, we know intimately that our business is not a wood versus steel business; it is truly a component manufacturing business. Wood components and steel components are very complementary product lines for us—we're really all simply in the building component business."

For more information on participating in WTCA's CFSC, contact WTCA at 608/274-4849.

## Welcome to our newest SBC Program Advertisers...

Bronze Advertisers:

- BOSS Tiedowns & Strapping
- GR Morris & Associates, Inc.
- Masengill Machinery Company
- PFP Technologies (Razor USA)

### Many thanks for your support!

### WTCA Board of Directors

#### Officers & Executive Committee Reps.

- **President:** Donald Groom • Stark Truss Co., Inc. • 330/478-2100 • [don.groom@starktruss.com](mailto:don.groom@starktruss.com)
- **President Elect/Treasurer:** Barry E. Dixon • True House, Inc. dba True Truss • 904/757-7500 • [barry@truehouse.com](mailto:barry@truehouse.com)
- **Secretary:** Robert J. Becht • Chambers Truss, Inc. • 772/465-2012 • [bob@chamberstruss.com](mailto:bob@chamberstruss.com)
- **Past President:** Kendall Hoyd • Idaho Truss & Component Co. • 208/888-5200 • [kendallh@idahotruss.com](mailto:kendallh@idahotruss.com)
- **Kenneth M. Cloyd** • California Truss Co. • 909/657-7491 • [kenc@caltruss.com](mailto:kenc@caltruss.com)
- **Dwight Hikel** • Shelter Systems Limited • 410/876-3900 • [dwhight@sheltersystems.com](mailto:dwhight@sheltersystems.com)
- **Frank B. Klinger** • Mid-Valley Truss & Door Co. • 956/428-7090 • [lftcfbk@aol.com](mailto:lftcfbk@aol.com)

#### At-Large Representatives

- Dean DeHoog • Trussway - Central • 616/887-8264
- Allen Erickson • Cal-Asia Truss • 925/680-7701
- Ben Hershey • Alliance TruTruss, LLC • 602/252-1772
- David Horne • Universal Forest Products, Inc. • 800/476-9356
- John A. Smith • Foxworth-Galbraith Lumber Co. • 972/437-6100
- Steven A. Spradlin • Capital Structures Inc. • 479/783-8666
- Mike Walsh • Stock Components • 919/431-1000

#### Directors Representing Chapters

- Keith Azlin • U.S. Components, LLC • 520/882-3709
- Bruce J. Bain • Richco Structures • 920/336-9400
- Michael Balliet, Jr. • Bama Truss & Components • 205/669-4188
- Priscilla J. Becht • Chambers Truss, Inc. • 772/465-2012
- Rick Cashman • Florida Forest Products • 727/585-2067
- Mark A. Casp • Casmin, Inc. • 352/343-0680
- David A. Denoncourt • Tibo Lumber Truss Manufacturers • 603/796-2974
- Jack Dermer • American Truss Systems, Inc. • 281/442-4584
- Simon Evans • Bay Truss Inc. • 510/232-0937
- James C. Finkenhoefer • Truss Systems, Inc. • 770/787-8715
- Joseph D. Hikel • Shelter Systems Limited • 410/876-3900
- John Hogan • Vivco Components • 816/449-2161
- John Huck • Home Lumber Company • 303/791-3715
- David W. Hughes • Oregon Truss • 503/581-8787
- Michael Karceski • Atlas Components, Inc. • 815/332-4904
- Ted Kolanko, P.E. • 84 Components • 615/287-0184
- Chris Lambert • Southeastern Materials, Inc. • 704/983-1144
- Glenn McClendon • Sun State Components, Inc. • 702/657-1889
- David Motter, P.E. • Tri-County Truss • 360/757-8500
- Richard P. Parrino • Plum Building Systems • 515/327-0698
- Michael Redmon • Carolina Truss Systems, Inc. • 843/875-0550
- Mark H. Rose • Manning Building Supplies, Inc. • 904/268-8225
- Timothy Rouch • Gang-Nail Truss Co., Inc. • 559/651-2121
- Gary Sartor • Stone Truss Company, Inc. • 760/967-6171
- Steven L. Stroder • Carter-Lee Building Components Inc. • 317/834-5380
- James M. Swain • Carpenter Contractors of America • 239/437-1100
- Terry Tontarski • Fabco - Tontarski, Inc. • 315/782-5283
- Dave Walstad • U.S. Components, Inc. • 609/518-9759
- Scott Ward • Southern Components, Inc. • 318/687-3330
- Stephen Yoder • Stark Truss Co., Inc. • 330/478-2100

#### Associate Member Directors

- Gary Dunn, P.E. • Boise Building Solutions • 541/826-0200
- Steve Hanek • USP Structural Connectors • 507/364-5425
- Charles C. Hoover, Jr., P.E. • Alpine Engineered Products • 863/422-8685
- Joe Kusar • Tolleson Lumber Co., Inc. • 478/987-2105



## Open Quarterly Meeting Highlights: August 2-4 2006, San Diego, CA

In August, 70 members and staff gathered in San Diego, CA for the WTCA Open Quarterly Meeting. An Engineering & Technology Committee Meeting and the Component Manufacturers' Roundtable were held on Wednesday. Thursday was brimming with additional committee meetings, as the Legislative, Marketing, Management & Business Insurance, Quality Control and Membership Committees all met to work through priorities, receive updates on current projects and plan for the future. The productive week concluded with a full Board meeting on Friday morning.

Some highlights from the week include:

- Prior to WTCA's OQM TPI held its project committee meetings, which were very productive. Chapter 3 is completed with a few minor issues to finalize. The industry collaboration and teamwork on recrafting TPI 1 is excellent and makes the entire process very valuable.
- One of the tremendous aspects of this OQM was the great discussion at each meeting. It was clear that there was strong interest in the topics being discussed, and in many cases the discussion could have gone on for quite some time.
- For component manufacturers, the Component Manufacturers' Roundtable continues to be one of the more interesting and informative meetings taking place. So much so that it was decided to extend the time for this meeting to ensure that there is plenty of time to cover important CM issues. At this meeting, the group discussed lumber

grading issues, recent building collapses, software licensing, industry consolidation, and the lumber trading data survey.

- On Thursday, several committees met and discussed the next steps in moving us toward effectively accomplishing the priorities set at the beginning of the year. A few highlights follow:
  - At the Marketing Committee meeting, members reviewed a new proposed component manufacturing certification program tentatively entitled SCORE (Structural Component Operations Reaching for Excellence). By participating in various WTCA programs, CMs will be able to set themselves apart in the marketplace and market to their customers that they are on a path of continual improvement and enhanced professionalism. Companies will be able to attain different levels of certification through WTCA.
  - The Legislative Committee discussed combining efforts with the National Lumber & Building Material Dealers Association for next year's Legislative Conference.
  - The Management Committee provided excellent feedback on the In-Plant Basic Training program, targeted toward training plant personnel. The course is slated to be completed by December 1.
  - In the QC Committee meeting, the committee approved a motion to recommend to the board that the In-Plant WTCA QC certification pricing be updated to a fee-based approach.
  - The Membership Committee approved the creation of a two-day Annual Regional Workshop & Conference to replace the two sepa-

Continued on page 127

## New WTCA Members

### Ada Insurance Center/ AIC Insurance Services

7275 Bronson St SE  
Ada, MI 49301  
616/676-4000  
Mr. Mark J. Vickery  
Sponsor: Mr. Jim Defoe

### Aegis Metal Framing, LLC

14515 N Outer 40 Ste 110  
Chesterfield, MO 63017-5746  
314/851-2200  
Mr. Tom Valvo

### All-Span, Inc.

9347 All-Span Dr  
Bridgeville, DE 19933-2982  
302/349-9460  
Mr. Roy Zeh

### Allied Studco

2525 N 27th Ave  
Phoenix, AZ 85009-1710  
602/352-7641  
Mr. Michael Meek

### Davis Roof Truss Mfg Company

PO Box 1903  
Texarkana, AR 75504  
870/773-6866  
Mr. Michael E. Cutsinger  
Sponsor: Mr. Richard Terbrock

### Deltec Homes, Inc.

69 Bingham Rd  
Asheville, NC 28806-3824  
828/253-0483  
Mr. David Hall

### Eagle Truss LLC

1015 Highland Rd  
Collinwood, TN 38450-5621  
931/724-5161  
Mr. Jeff McGehee

### Evolution Truss

2470 N Decatur Blvd Ste 170  
Las Vegas, NV 89108-2984  
702/216-1685  
Mr. Jayson Manning

### Meek's Lumber & Hardware

1045 Twin View Blvd  
Redding, CA 96003-2047  
530/244-6335  
Mr. Michael Ducazan

### QB Corporation

1420 Hwy 28  
Salmon, ID 83467-5333  
208/756-4248  
Mr. Dennis Lentz

### Quick Tie Products Inc.

2951 Powers Ave  
Jacksonville, FL 32207-8009  
904/732-9377  
Mr. Harvel K. Crumley

### Roseburg Forest Products Co.

PO Box 1088  
Roseburg, OR 97470  
541/679-3311  
Mr. Bob Berch

### Spalding Truss, Inc.

PO Box 420  
Sunny Side, GA 30284-0420  
770/229-9711  
Mr. John Whitney

### Standard Truss & Supply

4519 Cedar Butte Cir  
Rexburg, ID 83440  
541/788-7877  
Mr. Ronald E. Kinville

### Truss Industry Production Systems

PO Box 343  
Britton, SD 57430  
605/448-5959  
Mr. Clyde Fredrickson

### W.B. Howland Co., Inc.

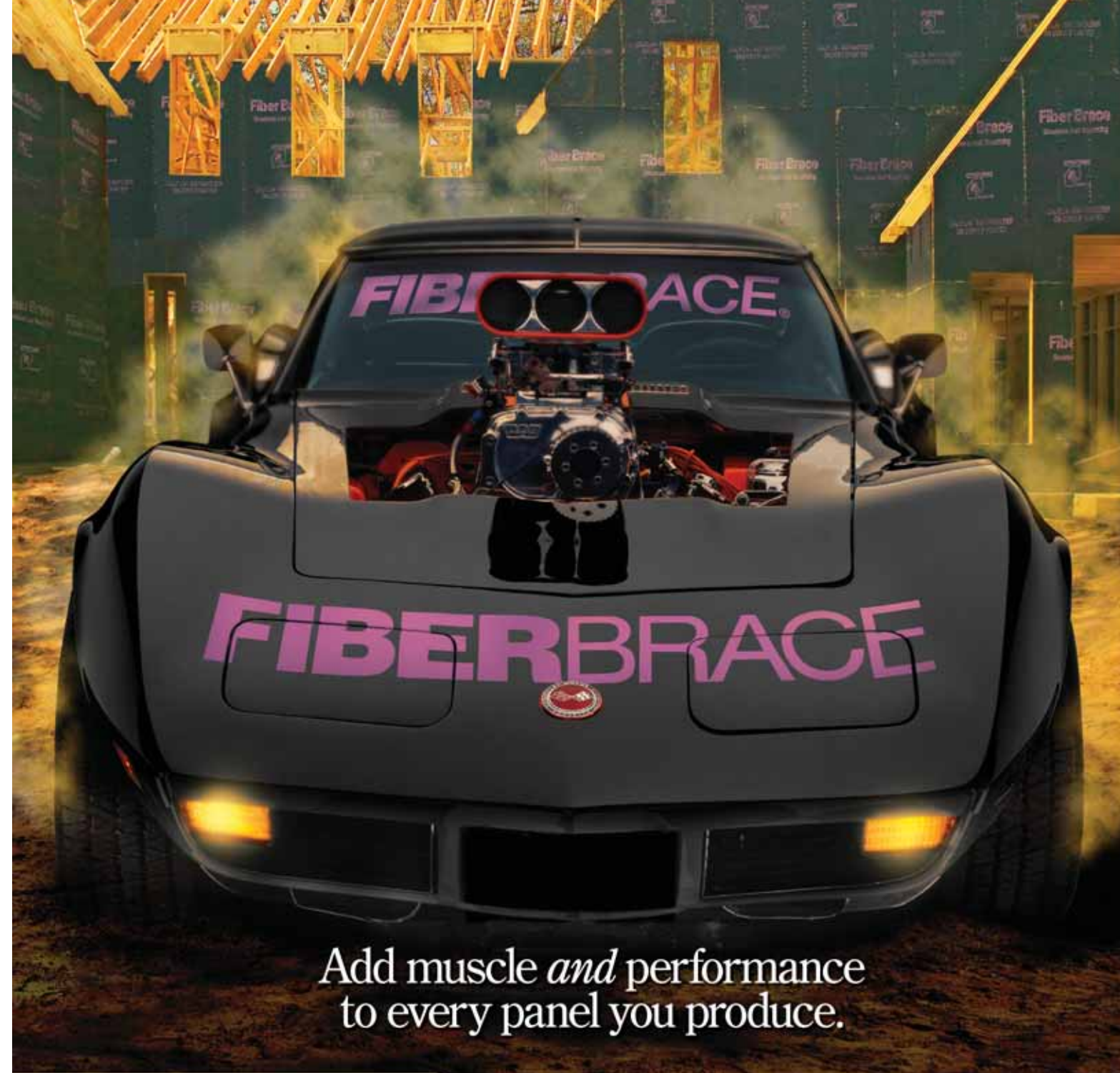
610 11th St  
Live Oak, FL 32064  
386/362-1235  
Ms. Cindy Gude

### West Orange Truss

8612 Justice Place  
Groveland, FL 34736  
352/429-3639  
Mr. Doug Hill

For more information about WTCA membership, contact Anna (608/310-6719 or astamm@qualtim.com) or visit [www.sbcindustry.com](http://www.sbcindustry.com).

Listing as of August 11, 2006.



Add muscle *and* performance  
to every panel you produce.

**FIBERBRACE** Structural  
a TempleInland product Wall Sheathing

	FiberBrace®	OSB/Wood Structural Panels	Foam Insulating Sheathing	Thin Laminated Sheathing
Offers Structural Wall Bracing	✓	✓	✗	✓
Vapor Permeance 9.0 or Higher	✓	✗	✗	✗
Added Insulation **R-1.22 or Higher @ 1"¹	✓	✗	✓	✗
Noise Control ***NRC .35 or Higher	✓	✗	✓	✗

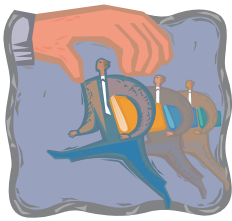
¹"R" is resistance to heat flow. The higher the R-value, the greater the insulating value.  
\*\*\*Noise Reduction Coefficient

Beef up insulation, noise control and permeability as well as strength.

What if you found a structural sheathing driven by more than strength alone? Providing muscle *and* performance? Delivering lightweight handling, easy cutting and a production-line speed boost? What if it added a combination of extra insulation value, superior noise control and critical moisture permeability no other sheathing could match? What if it was available in 8', 9' and 10' lengths and had a long history of consistent cost efficiency? Well, that product exists. It's FiberBrace structural wall sheathing. Call today for your own test drive.

[www.templeinland.com](http://www.templeinland.com) | 800-231-6060

**TempleInland**



## Classified Ads

### WOOD TRUSS & PANEL COMPONENT PROFESSIONALS

Are you looking for a career that rewards and promotes individuals based on performance?

84 Components is currently seeking enthusiastic wood truss and panel professionals. Available positions include **General Managers, Sales, Design Managers, Senior or Experienced Designers, and Production Management.**

This is an excellent opportunity for motivated individuals to grow with a rapidly expanding, debt-free company. 84 Components currently has 18 manufacturing facilities, with plans for major expansion!

**Qualifications:**  
Qualifying candidates MUST possess experience in the wood truss and/or panel industry.

**Locations:**  
GA-FL-IN-MD-NJ-NC-OH-PA-TN-WV-AZ-CO-CA

For confidential consideration, please forward your resume to:  
**Attn: Bill Dove, Job Code MAG-BD**  
Fax: 724-228-2888  
Email: careers@84lumber.com



### please note:

A WTCA member's entry was inadvertently excluded from the **Supplier & Professional Directory** that ran in the August 2006 issue of **SBC**. The following company should have been included under **Recruiting/Placement Specialist:**

#### PrincetonOne

7th Floor 36 S Pennsylvania Ave  
Indianapolis, IN 46204  
317/257-5411 (phone)  
317/259-6886 (fax)  
www.PrincetonOne.com  
Mr. Jack G. Ritter  
Jack.Ritter@PrincetonOne.com

*We apologize for any inconvenience this may have caused.*

### COMPONENT SAW FOR SALE

'98 Timbermill 6 blade component saw. Excellent cord saw with digital read outs. Chain driven waste conveyer. 2 available. S Calif. \$65,000 ea. \$120,000 for both. Contact Dean Turner 951/657-7491 or deant@caltruss.com

### "CRACKERJACK!" WALL PANEL DESIGNER

If you are a real "pro" at panel design we need you on our team. Need a min. of 5 years exp. We are located in New Bedford, Mass. on the South Coast between Providence and Boston. Call Steve Linsky at 800/370-9663 x 731 or email to slinsky@national-lumber.com. We will pay you well plus incentive, benefits, bonus and relocation to our area.

### FOR SALE - TRUSS PLANT

High growth area of central Florida. 5M in annual sales. Owner ready to retire after 20+ yrs of successful business. Sale to incl. business & approx. 5 acres. Reply to P.O. Box 422462, Kissimmee, FL 34742 or call 407/509-3568. No brokers.

### LOOKING FOR MANAGERS

Lumbermens is one of the nation's largest & fastest growing suppliers of quality lumber & building materials. Due to continued growth, we are seeking several exp. & aggressive individuals to add to our team: General Mgr-Truss Plant (Clackamas, OR) & Truss Plant Mgr (Bend, OR) Exc. benefits. EOE/Drug & Alcohol Free Workplace. Email résumé to Sierra Murphy at careers@lumbermens.net or fax to 360/486-3107.

### PIGGYBACK® 4-WAY FORKLIFT

Now deliver extra long loads to highly congested sites (previously inaccessible) w/ Princeton's unique PiggyBack "4-Way" truck mounted forklift. Designed to move long loads through tight spots, the "4-Way" easily handles EWP, siding & lumber with exceptional stability. Call 800/331-5851 or email sales@piggy-back.com.

### TRACTOR MOUNTED BOOM TRUCKS

National Crane, Tadano Crane. New or used. Call Frank at Runnion Equipment 800/824-6704. Check out our web [www.runnionequipment.com](http://www.runnionequipment.com)

### WOOD FIRED SHOP HEATERS

Heat your shop with waste wood! Biomass Combustion Systems' 450,000 BTU and 800,000 BTU Shop Heaters will reliably heat your industrial facility. The 25 year field-tested design is safe, durable and clean burning. Eliminate your fuel bills with BCS Shop Heaters. [biomasscombustion.com](http://biomasscombustion.com) or call 508 798-5970.

Instant information online at  
[www.wasserman-associates.com](http://www.wasserman-associates.com)

- Home page with links to major truss, wall panel, stair, door & material handling manufacturers
- Used Machinery List with photos & frequent updates
- Specials Page with the latest discounted offers from our respected manufacturers
- Newsletter Page covering current industry events & offerings
- Contacts Page with phone, fax and cell numbers for convenient access to our team of professionals



800/382-0329 phone • 402/438-2524 fax  
[www.wasserman-associates.com](http://www.wasserman-associates.com)

### Buy/Sell Used Equipment

Looking to sell excess equipment?  
Wanting to buy used equipment? We will be promoting used equipment at the BCMC show in Houston, TX.

For reader service, go to [www.sbcmag.info/wasserman.htm](http://www.sbcmag.info/wasserman.htm)

John Griffith

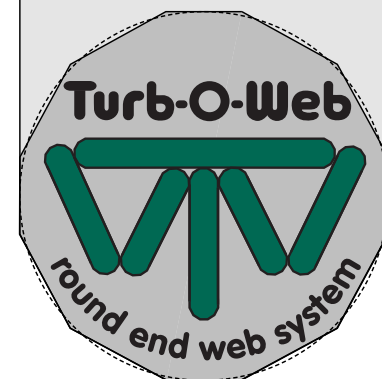
### Turb-O-Web USA, Inc.

Daytona Beach, Florida

Office 888 887 2693

Email: [john@turb-o-web.com](mailto:john@turb-o-web.com)

[www.turb-o-web.com](http://www.turb-o-web.com)



Patented in the U.S. and Canada

For reader service, go to [www.sbcmag.info/turb-o-web.htm](http://www.sbcmag.info/turb-o-web.htm)

### WTCA OQM Highlights

Continued from page 30

rate workshops that have been held in previous years. The target audience will be both managers and technical staff. Attendees will be able to participate in the entire two-day event or simply attend the portion that provides the most benefit to them.

- A high point of the meetings was Thursday's boat trip through the San Diego harbor followed by a tasty dinner. A huge thanks goes to Ken Cloyd of Cal Truss who pulled this together for all the attendees to enjoy!
- The Board meeting on Friday topped off an excellent week of meetings and gave chapters the opportunity to bring up important matters happening across the country. Some key motions that passed include:
  - Motion to adopt to WTCA's new mission statement, which can be found on the WTCA website at [www.sbcindustry.com/aboutus.php](http://www.sbcindustry.com/aboutus.php).
  - Motion to move the dates of the 2007 annual legislative conference to April 16-18, and coordinate joint activities between WTCA and National Lumber & Building Materials Association (NLBMDA) to leverage the advocacy strength of the combined membership.
  - Joint motion with the Executive Committee to adopt a new pricing model for the WTCA QC program.
  - Motion for WTCA to use the Cold Formed Steel Council as a developmental model for a council process and implement other councils as needed to best serve the diverse market-specific interests of the entire WTCA membership. **SBC**

*The next WTCA Open Quarterly Meeting will be held October 7 at the Hyatt Regency in Houston, TX, following BCMC 2007. For more information, contact WTCA staff at 608/274-4849 or [wta@sbcindustry.com](mailto:wta@sbcindustry.com), or visit [www.sbcindustry.com](http://www.sbcindustry.com).*

It's Midnight.

## Can Your Software Tell You How Much a Truss Costs?



At Deacom, we value simplicity. That's why we engineered the DEACOM Integrated Accounting and Enterprise Resource Planning (ERP) Software System to manage all the day-to-day job costing and business issues faced by building component manufacturers. Our single DEACOM system is designed to handle a variety of unique requirements to help control the details of complex businesses, like yours.

The DEACOM ERP system seamlessly links all areas of your business - from engineering links and inventory control, to order entry and invoicing - so you always know what it costs to build a truss.

Visit [www.deacom.net](http://www.deacom.net) today to arrange a web demonstration and learn how the DEACOM ERP system can maximize your productivity and profitability.



950 West Valley Road, Suite 3000 | Wayne, PA 19087 | Phone 610-971-2278 ext. 15  
Fax 610-971-2279 | [marketing@deacom.net](mailto:marketing@deacom.net) | [www.deacom.net](http://www.deacom.net)

For reader service, go to [www.sbcmag.info/deacom.htm](http://www.sbcmag.info/deacom.htm)



# Thank YOU

TO THE THURSDAY EVENING  
OQM DINNER SPONSORS

- Gold
  - CompuTrus, Inc.
  - ITW Building Components Group
  - Alpine Engineered Products, Inc.
  - Truswal Systems
  - MiTek Industries, Inc.
- Silver
  - Simpson Strong-Tie Co.
- Bronze
  - Viking Engineering

# STRUCTURAL BUILDING COMPONENTS™

THE FUTURE OF FRAMING

[www.sbcmag.info](http://www.sbcmag.info)

Dear Reader:

Copyright © 2006 by Truss Publications, Inc. All rights reserved. For permission to reprint materials from **SBC Magazine**, call 608/310-6706 or email [editor@sbcmag.info](mailto:editor@sbcmag.info).

The mission of **Structural Building Components Magazine (SBC)** is to increase the knowledge of and to promote the common interests of those engaged in manufacturing and distributing of structural building components to ensure growth and continuity, and to be the information conduit by staying abreast of leading-edge issues. SBC will take a leadership role on behalf of the component industry in disseminating technical and marketplace information, and will maintain advisory committees consisting of the most knowledgeable professionals in the industry. The opinions expressed in SBC are those of the authors and those quoted solely, and are not necessarily the opinions of any affiliated association (WTCA) .



6300 Enterprise Lane • Suite 200 • Madison, WI 53719  
608/310-6706 phone • 608/271-7006 fax  
[www.sbcmag.info](http://www.sbcmag.info) • [admgr@sbcmag.info](mailto:admgr@sbcmag.info)