

Frequently Asked Questions

The New Jobsite Bracing Guides: BCSI-B1 & B2 Summary Sheets by Rachel Smith

Why has the industry retired HIB-91 and other bracing guides used in the past? "Brace" yourself for the change!

A guide for handling, installing and temporary bracing is a very important part of any jobsite package. Up until now, the most common bracing guides were the orange, six-page HIB-91 Summary Sheet produced by TPI, the WTCA-B1 Warning Poster and WTCA-B2 TTB on temporary bracing. They were practically the truss industry's calling cards to the construction community.

With the advent of the new Building Component Safety Information (BCSI 1-03) Guide to Good Practice for Handling, Installing & Bracing of Metal Plate Connected Wood Trusses booklet, we are also creating new jobsite guides. First off, let me clarify that the BCSI 1-03 booklet replaces the HIB-91 booklet, not the HIB-91 Summary Sheet. If you were including the HIB-91 Summary Sheet in your jobsite packages, we are not suggesting you use the BCSI 1-03 booklet instead.

The BCSI booklet is broken out into eleven separate documents called the B-Series. Each of these sections will be available as a summary sheet. Truss manufacturers can choose which of these summary sheet documents to include in their jobsite packages. WTCA recommends that you at least use the first section, the BCSI-B1 Summary Sheet Guide for Handling, Installing & Bracing of Metal Plate Connected Wood Trusses. B1 replaces both the HIB-91 Summary Sheet and the WTCA-B1 Warning Poster (see Figure 1). It maintains the warning poster format, with a blank side for printing truss placement diagrams. In addition, most of the text is presented in both English and Spanish. For a more comprehensive bracing information package, we suggest that you also include the eight-page B2 Summary Sheet on Truss Installation and Temporary Bracing, which replaces the TTB WTCA-B2 on temporary bracing. The reason that we suggest adding the B2 Summary Sheet is because it is a far more comprehensive approach to applying temporary bracing than any previous document, showing a step-by-step procedure and several temporary bracing options.

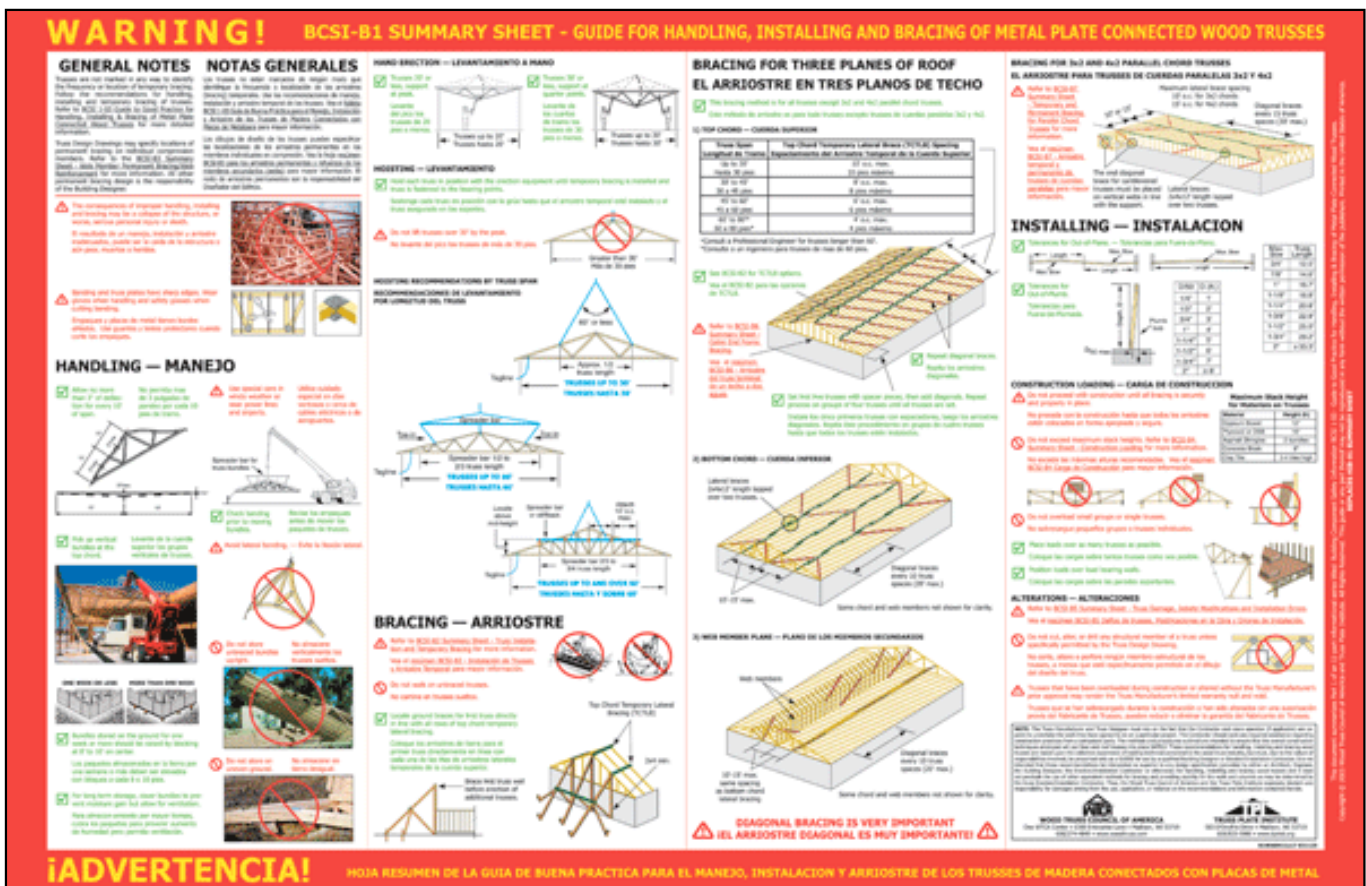


Figure 1.

QUESTION

How can the new BCSI-B1 Summary Sheet replace the HIB-91 Summary Sheet when it doesn't contain the exact same information?

ANSWER

For years, TPI and WTCA have been working on updating the bracing guides to reflect a more realistic yet safe approach to bracing on the jobsite. One of the realities addressed in some of the latest versions of WTCA's bracing guides is the use of top chord spacer pieces. This represents a huge departure from the truss industry's traditional stance that spacer pieces must not be used for bracing. Properly sized and installed spacer pieces in concert with continuous diagonal bracing, are a viable temporary bracing alternative to the traditional continuous lateral bracing with diagonals at 20' on-center. To answer the question, this is a "new and improved" bracing guide. If it was exactly the same information, there wouldn't be much point to updating it.

The first thing you may notice about the B1 Summary Sheet is that it offers the spacers pieces/continuous diagonal bracing option for top chord temporary bracing. The industry review group for the BCSI booklet and summary sheets felt that this was the more conservative approach because it emphasized the importance of diagonal bracing more than the other options. The new B1 also emphasizes the importance of stabilizing the first truss with ground bracing, setting the next of four trusses, completely bracing those first five, and then proceeding with the next set of four in the same manner. (See Figure 2.) The B2 Summary Sheet provides more detail on the recommended bracing options with plenty of graphics and illustrations to back it up. This document is also bilingual.

1) TOP CHORD — CUERDA SUPERIOR

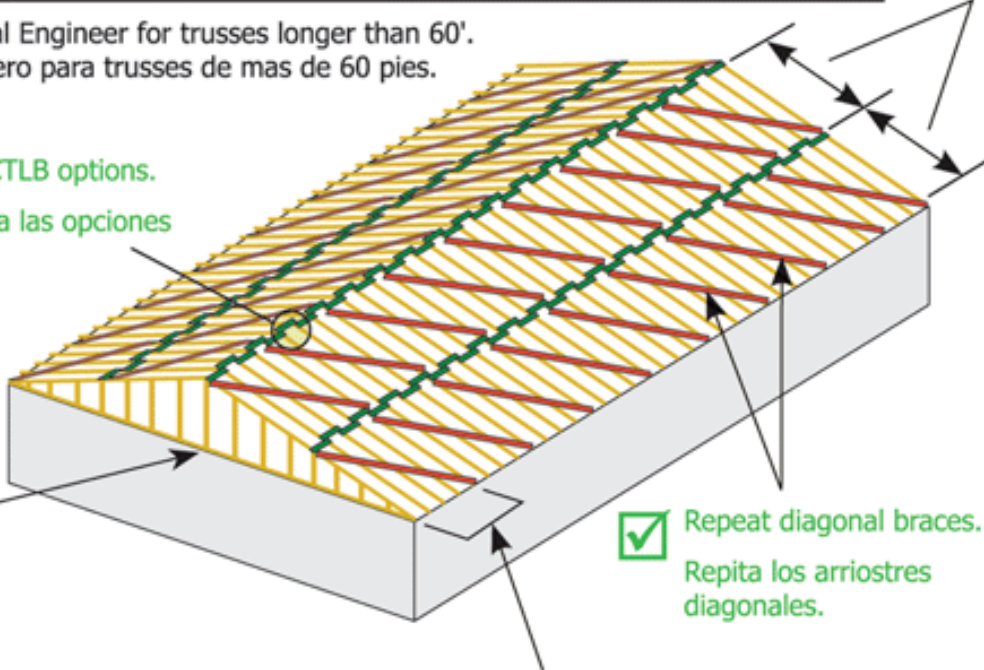
Truss Span Longitud de Tramo	Top Chord Temporary Lateral Brace (TCTLB) Spacing Espaciamiento del Arriostre Temporal de la Cuerda Superior
Up to 30' Hasta 30 pies	10' o.c. max. 10 pies máximo
30' to 45' 30 a 45 pies	8' o.c. max. 8 pies máximo
45' to 60' 45 a 60 pies	6' o.c. max. 6 pies máximo
60' to 80'* 60 a 80 pies*	4' o.c. max. 4 pies máximo

*Consult a Professional Engineer for trusses longer than 60'.

*Consulte a un ingeniero para trusses de mas de 60 pies.

✓ See BCSI-B2 for TCTLB options.
Vea el BCSI-B2 para las opciones de TCTLB.

⚠ Refer to BCSI-B6 Summary Sheet - Gable End Frame Bracing.
Vea el resumen BCSI-B6 - Arriostre del truss terminal de un techo a dos aguas.



✓ Repeat diagonal braces.
Repita los arriostres diagonales.

✓ Set first five trusses with spacer pieces, then add diagonals. Repeat process on groups of four trusses until all trusses are set.

Instale los cinco primeros trusses con espaciadores, luego los arriostres diagonales. Repita éste procedimiento en grupos de cuatro trusses hasta que todos los trusses estén instalados.

Figure 2.

QUESTION

The Standard Building Code in Section 2309.2.3 says, "In the absence of specific bracing requirements, trusses shall be braced in accordance with....HIB-91." If HIB-91 is replaced with BCSI 1-03, what will happen to this code reference?

ANSWER

First and foremost, HIB-91 was a recommendation and the BCSI 1-03 guide is a recommendation also. Secondly, the building code applies to finished structures, not structures in the process of being constructed, so this reference was intended for the permanent bracing concepts found in HIB-91, not the temporary ones.

TPI and WTCA have composed a letter to the code agencies informing them that HIB-91 has been replaced with BCSI

1-03. (Visit the BCSI section of the www.woodtruss.com web site to download a copy of the letter.) We are not the first industry to update documents to new and improved versions, so code agencies have an established procedure for dealing with these types of updates. Should there be any local code agency questions, we will provide the assistance needed to make the transition smooth.

To pose a question for this column, email us at faq@woodtruss.com. To view other questions visit the [WTCA website](http://www.wtca.com).

[SBC HOME PAGE](#)

Copyright © 2004 by Truss Publications, Inc. All rights reserved. For permission to reprint materials from SBC Magazine, call 608/310-6706 or email editor@sbcmag.info.

The mission of Structural Building Components Magazine (SBC) is to increase the knowledge of and to promote the common interests of those engaged in manufacturing and distributing of structural building components to ensure growth and continuity, and to be the information conduit by staying abreast of leading-edge issues. SBC will take a leadership role on behalf of the component industry in disseminating technical and marketplace information, and will maintain advisory committees consisting of the most knowledgeable professionals in the industry. The opinions expressed in SBC are those of the authors and those quoted solely, and are not necessarily the opinions of any of the affiliated associations (SBCC, WTCA, SCDA & STCA).